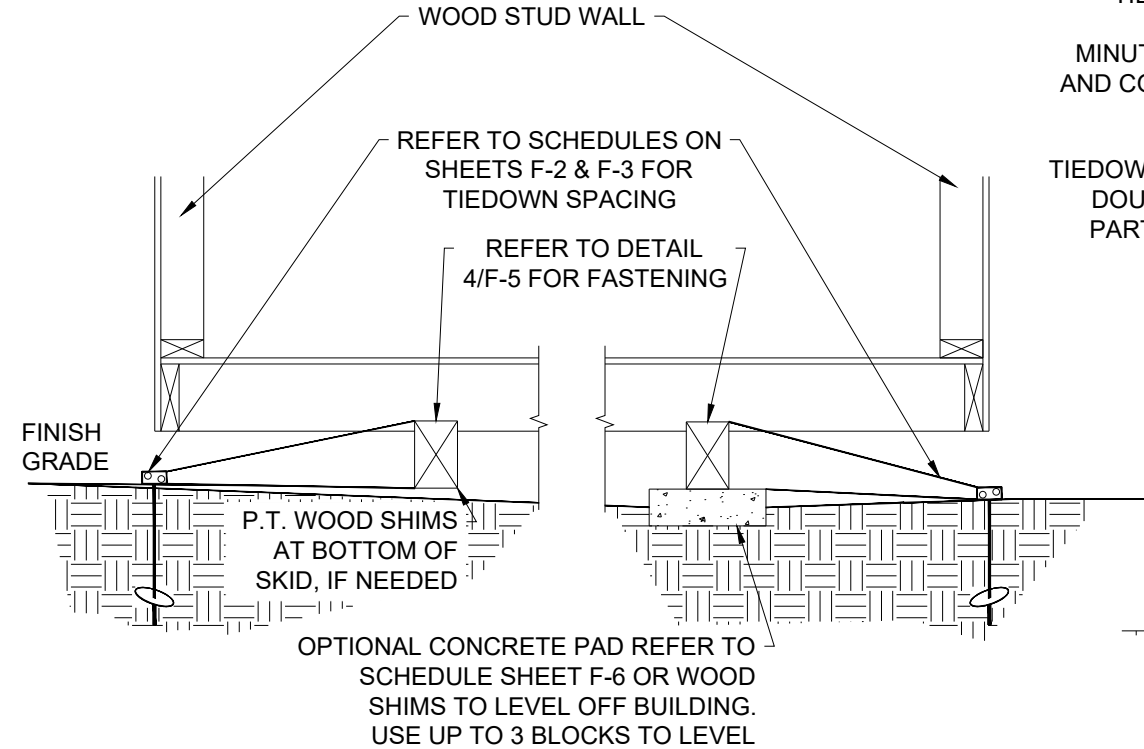
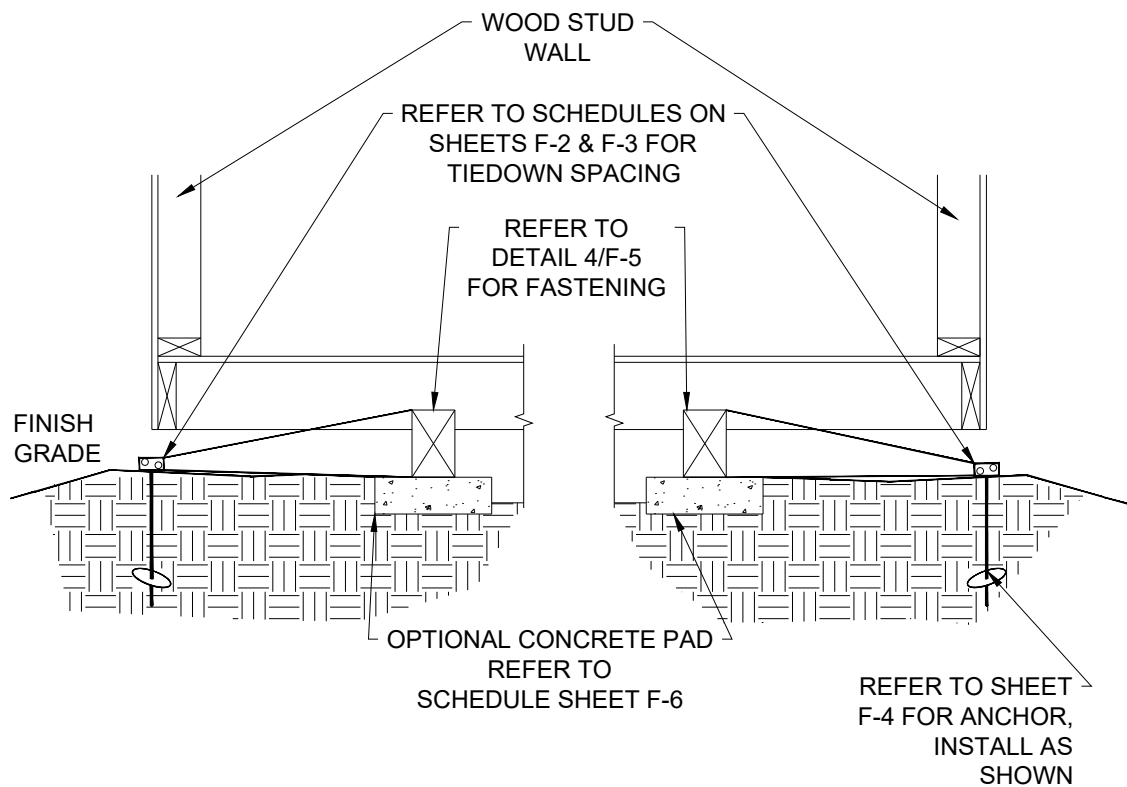


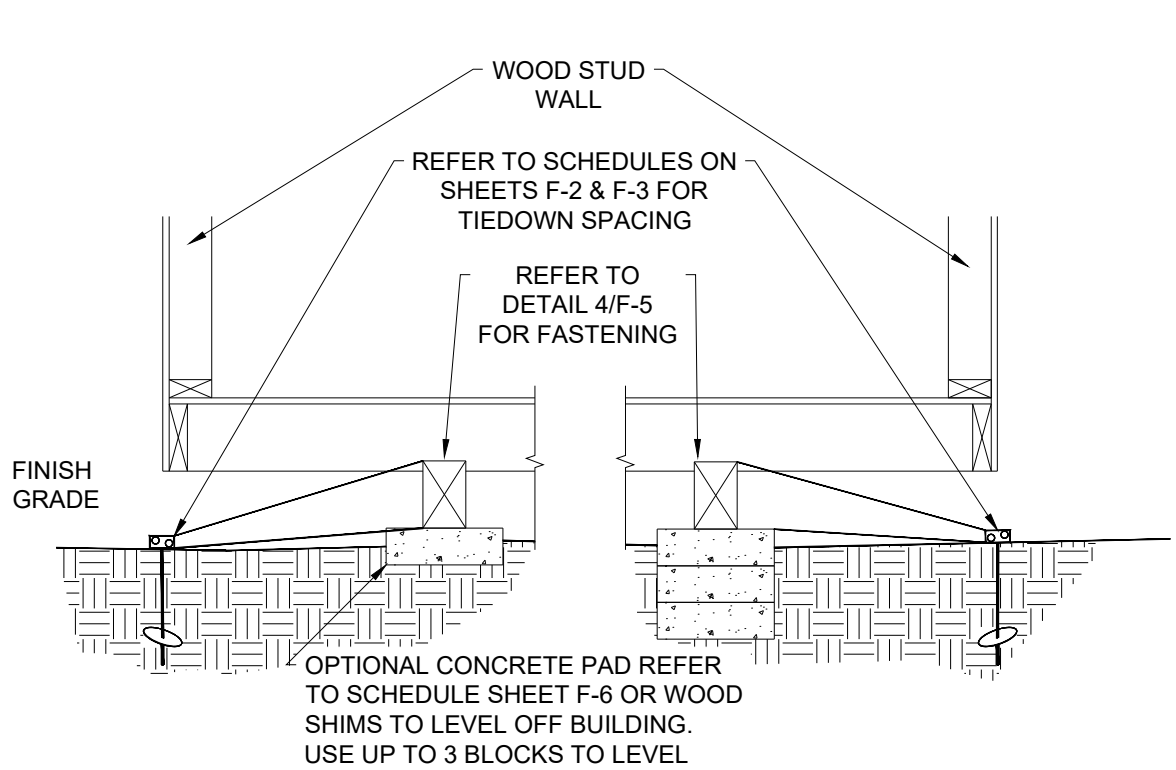
1
F-5 **ALL SKIDS ON GRADE VERTICAL ANCHOR SECTION**
SCALE: N.T.S.



2
F-5 **SKIDS ON GRADE & CONC. PADS VERTICAL ANCHOR UN-LEVEL GROUND SECTION**
SCALE: N.T.S.

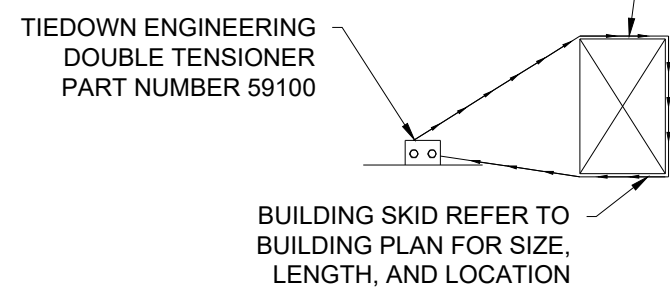


3
F-5 **ALL SKIDS ON CONC. PADS VERTICAL ANCHOR SECTION**
SCALE: N.T.S.

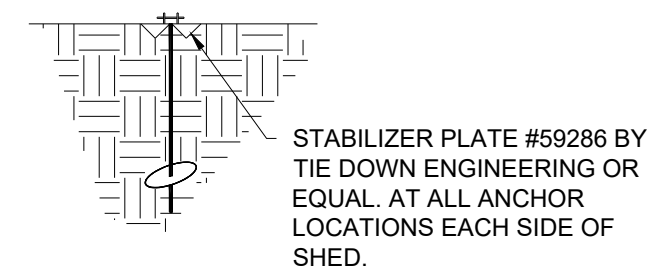


6
F-5 **ALL SKIDS ON CONC. PADS VERTICAL ANCHOR UN-LEVEL GROUND SECTION**
SCALE N.T.S.

TIEDOWN STRAP - 0.035 x 1-1/4" GALVANIZED STEEL QQS-781-H 1 FINISH B, GRADE 1 BY MINUTEMAN PRODUCTS INC. OR EQUAL. STRAP AND CONNECTION HARDWARE SHALL HAVE 4725 LB. MIN. ULTIMATE CAPACITY



4
F-5 **DETAIL**
SCALE: N.T.S.



5
F-5 **STABILIZER PLATE DETAIL**
SCALE N.T.S.

Engineer: Kent Bice
FL License #: 50421
FL COA#: 30468

This item has been electronically signed and sealed by Kent M. Bice P.E. on 11/02/2020 using a Digital Signature. Printed copies of this document are not considered signed and sealed and the signature must be verified on any electronic copies.

1552 6TH ST., WINTER HAVEN, FL 33880
(863)865-6502

TIEDOWN SECTIONS	
DATE: 11/02/20	DRAWN BY: RD
SCALE: AS NOTED	CHECKED BY: KMB

SHEET:
F-5
SHEET 5 OF 6

THESE PLANS WERE DESIGNED IN ACCORDANCE WITH THE 6TH EDITION, 2017 FLORIDA BUILDING CODE.