

Halsey Beshears, Secretary

Ron DeSantis, Governor

March 05, 2020

doug oliver

Cook Portable Purvis  
100 Douglas St.  
Valdosta, GA 31601

RE: Manufacturer Certification, ID MAF-9206; Expiration Date: April 23, 2023

Dear doug oliver

It is my pleasure to inform you that Cook Portable Purvis, located at 132 Central Industrial Row, Purvis, MS 39475, has been approved under the Manufactured Buildings Program, as provided for under Chapter 553, Part I, Florida Statutes, to manufacture Storage Sheds for installation in Florida.

Construction or modification on a manufactured building cannot begin until the Third Party Agency has approved the plans in accordance with the current Florida Building Code. Your Third Party Agency is a contractor for the Department and has statutory authority and responsibilities that must be met to maintain approved status. You may expect and demand quality plans review and inspections.

Each Code change will make your plans obsolete until they have been reviewed, approved and indicated [on the cover page of the plans] for compliance with the Code by your Third Party Agency for plans review. Please ensure that your plans are in compliance and are properly posted on our website. All site-related installation issues are subject to the local authority having jurisdiction.

The Department's contractor will make unannounced monitoring visits at least once each year. You must grant complete access to your manufacturing facility and records to remain in compliance with the rules and regulations of this program.

Your certification is approved for three years from this date. You will receive a renewal notice by Email generated by the BCIS ([www.floridabuilding.org](http://www.floridabuilding.org)) for online renewal. If you have questions you may contact Robert Lorenzo at 850-717-1835 or our FAX at 850-414-8436.

Please visit our website at [www.floridabuilding.org](http://www.floridabuilding.org) to see valuable information on the Florida Manufactured Buildings Program. A copy of this letter must accompany applications for local building permits.

Sincerely,



Robert Lorenzo  
Manufactured Buildings Program

cc: Top Line Engineering, LLC



December 18, 2018

Mr. Thomas Campbell  
Florida Department of Business and Professional Regulation  
2601 Blair Stone Road  
Building C  
Tallahassee, Florida 32399-6563

**RE: Plan Approval  
Cook Portable Purvis  
Plan # 2017--90 (Garden Shed)**

---

Dear Mr. Campbell,

Per the requirements of the Florida Department of Business and Professional Regulations, the above referenced plans have been reviewed for compliance with:

**2017 Florida Building Code, 6<sup>th</sup> Edition  
2014 National Electrical Code (NFPA-70)**

These plans comply with Florida Product Approval Rule 61G20-3.006 (FAC)

A signed and sealed set of plans are maintained on file with Topline Engineering, LLC.

All mandatory comments have been satisfied and plans are approved for construction by a currently approved modular building manufacturer.

If you have any questions or require my assistance in any way, please do not hesitate to contact me.

Thank you.

Respectfully,  


William E. Neary, III  
Business Partner  
Topline Engineering, LLC  
[BILL.TLE@yahoo.com](mailto:BILL.TLE@yahoo.com)

# COOK PORTABLE WAREHOUSES

100 DOUGLAS ST., VALDOSTA, GA 31601  
132 CENTRAL INDUSTRIAL ROW, PURVIS, MS 39475  
1398 HWY 95 NORTH, BASTROP, TX 78602

## STANDARD GARDEN SHED

STATE OF  
FLORIDA

Design Criteria	
BUILDING CODE	6TH EDITION, 2017 FLORIDA BUILDING CODE
ELECTRICAL CODE	2014 NEC, NFPA70
BUILDING TYPE	RESIDENTIAL LAWN STORAGE SHED
MANUFACTURER	COOK PORTABLE WAREHOUSES
AGENCY	TOP LINE ENGINEERING
AGENCY PLAN NUMBER	GARDEN 2017 FBC
CONSTRUCTION TYPE	V-B
FIRE PROTECTION	B
FIRE SUPPRESSION SYSTEM	NO
OCCUPANCY	U - UTILITY
NUMBER OF OCCUPANTS	0
ALLOWABLE # OF STORIES	1
WIND INFORMATION	160 MPH ULTIMATE; EXPOSURE C, CATEGORY I; ENCLOSED; +/- 0.18 INTERNAL PRESSURE COEFFICIENT; 15' HEIGHT
FLOOR LIVE LOAD	40.0 PSF
FLOOR DEAD LOAD	4.0 PSF
ROOF LIVE LOAD	20.0 PSF
ROOF DEAD LOAD	7.0 PSF
WALL DEAD LOAD	3.0 PSF
UNINHABITED LOFT LIVE LOAD	0.0 PSF
GROUND SNOW LOAD	0.0 PSF
FIRE RATING OF EXTERIOR WALLS	0
"R" RATING OF FLOOR, WALL, AND ROOF	R-0, R-0, R-0
MODULES PER BUILDING	1
SQUARE FOOTAGE	LESS THAN 719 SQ. FT.
EXEMPT FROM ENERGY CONSERVATION CODE?	YES
APPROVED FOR HURRICANE PROTECTION USAGE?	NO
DESIGNED FOR HURRICANE PUBLIC SHELTER?	NO

**SITE INSTALLED ITEMS:**  
NOTE THAT THIS LIST DOES NOT  
NECESSARILY LIMIT THE ITEMS OF WORK  
AND MATERIALS THAT MAY BE REQUIRED  
FOR A COMPLETE INSTALLATION. ALL SITE  
RELATED ITEMS ARE SUBJECT TO LOCAL  
JURISDICTION APPROVAL.

1. THE COMPLETE FOUNDATION  
SUPPORTING AND TIE-DOWN SYSTEM.
2. RAMPS, STAIRS, AND GENERAL  
ACCESS TO THE BUILDING IF  
NECESSARY.
3. GUTTERS AND DOWN SPOUTS ON ALL  
BUILDINGS WITH EAVES OF LESS THAN  
6 INCHES HORIZONTAL PROJECTION  
EXCEPT FOR GABLE END RAKES.

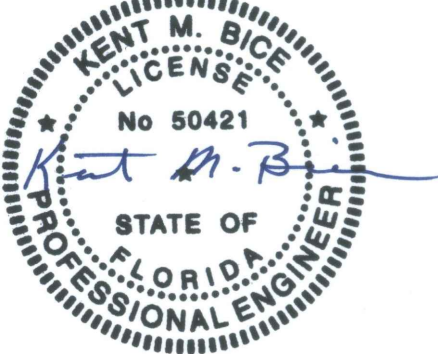
**OCCUPANCY NOTE:**  
THIS BUILDING IS NOT DESIGNED FOR  
HUMAN HABITATION AND DOES NOT  
HAVE RUNNING WATER OR SANITATION  
SERVICES. THIS BUILDING IS DESIGNED  
AS A UTILITY SHED TO STORE LAWN  
EQUIPMENT SUCH AS WHEEL BARROWS,  
GARDENING SUPPLIES, FLOWER POTS,  
AND CARDBOARD BOXES WITH VARIOUS  
SMALL ITEMS.

Sheet Index	
SHEET NUMBER	SHEET TITLE
S-1	COVER SHEET
S-2	GENERAL NOTES
S-3	WIND LOAD TABLES
S-4	FASTENING SCHEDULE
S-5	FRAMING PLANS
S-6	ELEVATION PANEL SIDING
S-6A	ELEVATION LAP SIDING
S-7	7'-11 1/2" SHED - FRAMING ELEVATION
S-8	9'-11 1/2" SHED - FRAMING ELEVATION
S-9	SIDE WALL ELEVATION
S-10	CROSS SECTIONS
S-11	CROSS SECTIONS
S-12	DETAILS
S-13	DETAILS
S-14	DETAILS



TOP LINE ENGINEERING, LLC  
STRUCTURAL ENGINEERS  
William E. Neary, III  
SMP-51, SMI-79, ICC 5185040  
10649 Oakview Pointe Terrace  
Gotha, Florida 34734

Engineer: Kent Bice  
FL License #: 50421  
COA# 30468



07/13/18

1552 6TH ST., WINTER HAVEN, FL 33880  
(863)865-6502

### COVER SHEET

DATE: 07/13/18	DRAWN BY: RD
SCALE: AS NOTED	CHECKED BY: KMB

SHEET:

S-1

SHEET 1 OF 15

THESE PLANS WERE DESIGNED IN ACCORDANCE WITH THE 6TH EDITION, 2017 FLORIDA BUILDING CODE.

GENERAL NOTES:

1. THIS STRUCTURE WAS DESIGNED IN ACCORDANCE WITH THE 6TH EDITION, 2017 FLORIDA BUILDING CODE, (2017 FBC).
2. ALL MATERIALS AND LABOR SHALL BE IN ACCORDANCE WITH THE ABOVE CODE AND ALL OTHER APPLICABLE LOCAL CODES AT THE TIME OF MANUFACTURE.
3. WRITTEN DIMENSIONS SHALL TAKE PRECEDENCE OVER SCALED DIMENSIONS.
4. THE FOUNDATION PLAN IS A SEPARATE SET OF PLANS FOR APPROVAL BY LOCAL MUNICIPALITIES.
5. EXTERIOR DIMENSIONS CAN VARY BETWEEN LIMITS SHOWN AT 2' O.C. BUT MEMBER SPACING SHALL NOT EXCEED LIMITS AS INDICATED.
6. ALL THE FOLLOWING LUMBER SHALL BE PRESSURE TREATED IN ACCORDANCE WITH AWPB USE CATEGORY UC4B (GROUND CONTACT, HEAVY DUTY)-SKIDS.
7. ALL THE FOLLOWING LUMBER SHALL BE PRESSURE TREATED IN ACCORDANCE WITH AWPB USE CATEGORY UC3B (EXTERIOR ABOVE GROUND, UNCOATED OR POOR WATER RUNOFF)-FLOOR JOISTS, PLYWOOD FLOOR DECKING, AND EXTERIOR RATED WOOD STRUCTURAL PANEL SIDING.
8. ALL FASTENERS AND CONNECTORS IN CONTACT WITH PRESSURE TREATED WOOD SHALL BE HOT DIPPED GALVANIZED (G185) OR STAINLESS STEEL.
9. ALL WINDOWS WITHIN 24" OF DOORS, AND ALL GLASS IN DOORS SHALL BE SAFETY, TEMPERED, OR ACRYLIC PLASTIC SHEET.
10. FOR ROOFS WITH ASPHALT SHINGLES AND A SLOPE BETWEEN 2 TO 12 AND 4 TO 12 SHALL HAVE A DOUBLE UNDERLAYMENT APPLICATION AS REQUIRED IN ACCORDANCE WITH SECTION 1507.2.2 OF THE 2017 FBC OR PER SHINGLE MANUFACTURER INSTRUCTIONS.
11. UNDERLAYMENT SHALL CONFORM WITH SECTION 1507.2.3 OF THE 2017 FBC OR PER SHINGLE MANUFACTURER INSTRUCTIONS.
12. ASPHALT SHINGLES SHALL CONFORM WITH SECTION 1507.2.5 OF THE 2017 FBC ATTACHMENT OF ASPHALT SHINGLES SHALL CONFORM WITH 1507.2.7 OF THE 2017 FBC.
13. FASTENERS FOR ASPHALT SHINGLES SHALL CONFORM TO SECTION 1507.2.6 OF THE 2017 FBC.
14. TIE-DOWNS SHALL MEET THE REQUIREMENTS OF ALL APPLICABLE CODES.
15. THESE PLANS HAVE NOT BEEN DESIGNED FOR HVHZ REQUIREMENTS AS SET FORTH IN THE 2017 FBC OR FOR USE AS A COMMERCIAL BUILDING.
16. THE CONTRACTOR SHALL BE RESPONSIBLE FOR VERIFYING ALL EXISTING CONDITIONS.
17. THE CONTRACTOR SHALL BE RESPONSIBLE FOR DELIVERY AND PLACEMENT OF LAWN STORAGE UNIT TO ENSURE THE INTEGRITY OF THE BUILDING AND ITS COMPONENT PARTS.
18. NO FIELD REVISIONS TO ANY STRUCTURAL COMPONENTS OR DEVIATIONS FROM THESE DRAWINGS SHALL BE MADE.
19. THE OWNER AND THE CONTRACTOR SHALL HOLD HARMLESS THE ENGINEER FROM AND AGAINST ALL LIABILITY CLAIMS, DAMAGES, LOSSES AND EXPENSES INCLUDING LEGAL FEES ARISING OUT OF OR RESULTING FROM ERRORS OR OMISSIONS IN THE PERFORMANCE OF THE WORK BY THE CONTRACTOR.
20. SECTIONS AND DETAILS ON THE DRAWINGS ARE INTENDED TO BE TYPICAL AND SHALL APPLY AT ALL SIMILAR LOCATIONS, UNLESS OTHER SECTIONS AND DETAILS ARE SPECIFICALLY REFERENCED.
21. REFER TO SUPPLIED FASTENING SCHEDULE FOR FASTENING BASED ON CONNECTION AND LOCATION OF MEMBERS AS PER 2017 FBC TABLE 2304.10.1 UNLESS NOTED OTHERWISE.
22. BUILDINGS HAVE BEEN DESIGNED FOR LP SMARTSIDE STRAND SUBSTRATE PANEL SIDING, LP SMARTSIDE PRECISION LAP SIDING SHALL BE USED WITH X-STRAPS OR STRUCTURAL SHEATHING AS DETAILED IN THIS PLAN SET
23. FASTENERS IN LP SMARTSIDE STRAND SUBSTRATE PANEL SIDING MUST NOT BE INSTALLED IN PANEL SIDING GROOVES IN THE FIELD OF THE PANEL SIDING OR WHEN THE PANEL SIDING GROOVES OCCUR AT CUT EDGES OF THE PANEL SIDING.
24. REFER TO THE ICC-ES EVALUATION REPORT ESR-1301 / 3090 FOR ADDITIONAL DATA AND SPECIFICATIONS OF LP SMARTSIDE STRAND SUBSTRATE PANEL / LAP SIDING.
25. MAX OPENINGS WIDTHS MUST COMPLY WITH DESIGN RATIOS AS PER ANSI/AF&PA SDPWS-2015. BUILDINGS HAVE BEEN DESIGNED TO HAVE ONLY OPENINGS WITH MAX WIDTHS EQUAL TO THOSE IN THE ENDWALL SHEAR WALL CHART.
26. PER SECTION 1609.1.2 OF THE 2017 FBC, STORAGE SHEDS THAT ARE NOT DESIGNED FOR HUMAN HABITATION AND THAT HAVE A FLOOR AREA OF 720 SQUARE FEET OR LESS ARE NOT REQUIRED TO COMPLY WITH THE MANDATORY WIND-BORNE-DEBRIS-IMPACT STANDARDS OF THE 2017 FBC.
27. BUILDINGS THAT ARE 400 SQUARE FEET OR LESS AND THAT ARE INTENDED FOR USE IN CONJUNCTION WITH ONE-AND-TWO-FAMILY RESIDENCES ARE NOT SUBJECT TO THE DOOR HEIGHT AND WIDTH REQUIREMENTS OF THE 2017 FBC PER 1010.1.1 (SEE EXCEPTION 8).
28. BUILDINGS HAVE BEEN DESIGNED TO HAVE ANCHORS DIRECTLY ATTACHED TO ALL FOUR CORNERS OF THE BUILDING TO RESIST TENSION FORCES FROM LATERAL WIND LOADS. THIS DESIGN CONSIDERATION MUST BE MADE BY INSTALLER WHEN ATTACHING ANCHORING SYSTEM TO BUILDING.
29. UNLESS NOTED OTHERWISE, ATTACH ALL MANUFACTURED PRODUCTS IN ACCORDANCE WITH MANUFACTURERS SPECIFICATIONS.
30. 2X4 SP #2 PRESSURE TREATED LUMBER SHALL BE SUBSTITUTED FOR 2X4 SPF #2 LUMBER IN WALLS FOR USE IN FLOOD PLAINS.
31. PER APA PRODUCT REPORT PR-N124, LP SMARTSIDE STRAND SUBSTRATE SERIES TREATED-ENGINEERED-WOOD PANEL AND LAP SIDING IS PERMITTED ON WALLS FOR USE IN FLOOD PLAINS.
32. 19/32" LP PROSTRUCT FLOORING WITH SMARTFINISH IS PERMITTED IN LIEU OF 5/8" APA RATED STRUCTURAL SHEATHING ON FLOOR. INSTALL PER MANUFACTURER INSTRUCTIONS.

TOP LINE ENGINEERING, LLC

STRUCTURAL ENGINEERS

William E. Neary, III

SMP-51, SMI-79, ICC 5185040

10649 Oakview Pointe Terrace

Gotha, Florida 34734

Engineer: Kent Bice

FL License #: 50421

COA# 30468

KENT M. BICE

LICENSE

No 50421

STATE OF

FLORIDA

PROFESSIONAL ENGINEER

07/13/18

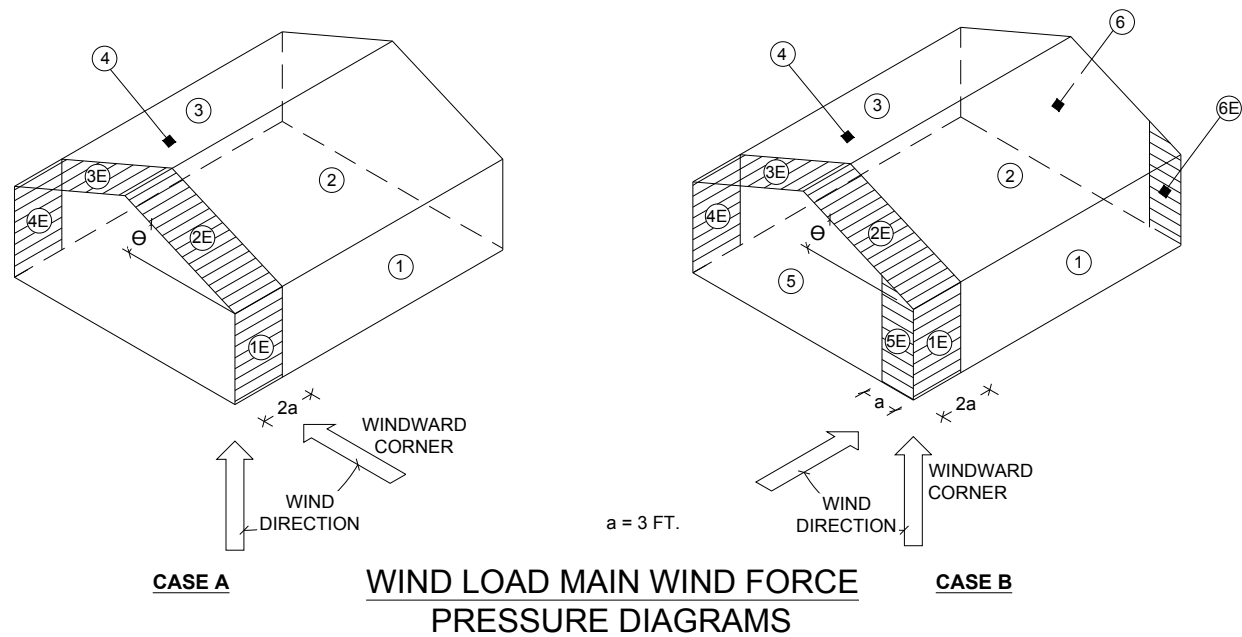
1552 6TH ST., WINTER HAVEN, FL 33880  
(863)865-6502

GENERAL NOTES	
DATE: 07/13/18	DRAWN BY: RD
SCALE: AS NOTED	CHECKED BY: KMB

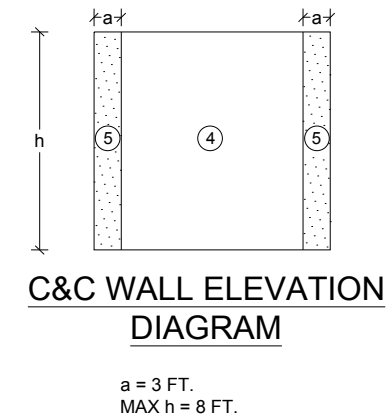
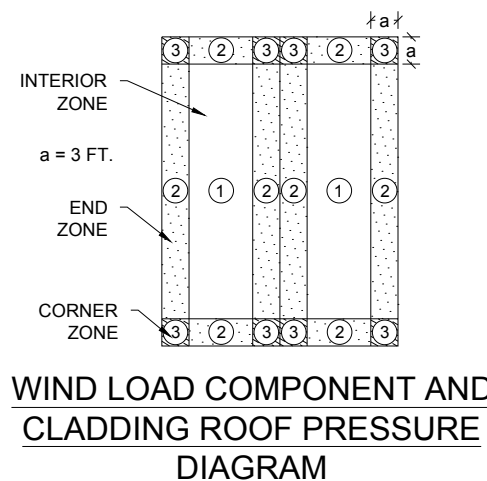
SHEET:

S-2

SHEET 2 OF 15



BUILDING DATA		ASCE 7-10 WIND	
WIND VELOCITY $V_{ULT}$	160 MPH	INTERNAL PRESSURE COEFFICIENT	$\pm 0.18$
WIND VELOCITY $V_{ASD}$	124	(ENCLOSED BUILDING ASCE 7-10)	
BUILDING CATEGORY	I	HEIGHT & EXPOSURE ADJUSTMENT COEFFICIENT	1.21
		ROOF DEAD LOAD RESISTING UPLIFT (PSF)	7.0
ROOF ANGLE, ° (DEGREES)	15 OR 30 DEGREES	MEAN ROOF HEIGHT	15
WIND EXPOSURE CATEGORY	C		



- NOTES:
- FOR EFFECTIVE AREAS BETWEEN THOSE GIVEN ABOVE THE LOAD MAY BE INTERPOLATED, OTHERWISE USE THE LOAD ASSOCIATED WITH THE LOWER EFFECTIVE AREA.
  - PLUS AND MINUS SIGNS SIGNIFY PRESSURES ACTING TOWARD AND AWAY FROM THE SURFACES, RESPECTIVELY.
  - PRESSURES SHOWN ARE APPLIED NORMAL TO THE SURFACE.
  - REFER TO PRESSURE ZONE DIAGRAMS PROVIDED FOR CORRESPONDING ZONES.
  - ROOF COVERINGS, FINISHES, ETC SHALL BE DESIGNED FOR THE FULL NEGATIVE DESIGN PRESSURE.

DESIGN WIND LOADS - WINDOWS, DOORS, COMPONENTS AND CLADDING

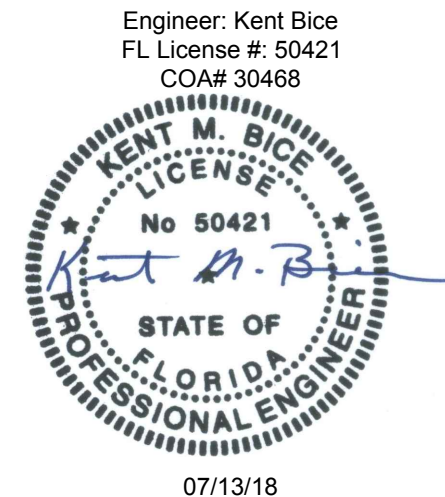
ROOF				WALLS			
ZONE	AREA (FT <sup>2</sup> )	DESIGN PRESSURE (PSF)		ZONE	AREA (FT <sup>2</sup> )	DESIGN PRESSURE (PSF)	
		POSITIVE	NEGATIVE			POSITIVE	NEGATIVE
1	10	50.9	-55.8	4	10	55.8	-60.5
1	20	49.6	-52.9	4	20	53.2	-58.0
1	50	47.7	-49.1	4	50	49.9	-54.6
1	100	46.2	-46.2	4	100	47.4	-52.2
2	10	50.9	-88.8	5	10	55.8	-74.7
2	20	49.6	-81.7	5	20	53.2	-69.6
2	50	47.7	-72.2	5	50	49.9	-62.9
2	100	46.2	-65.2	5	100	47.4	-58.0
3	10	50.9	-131.3				
3	20	49.6	-122.7				
3	50	47.7	-111.4				
3	100	46.2	-103.0				

DESIGN WIND LOADS - MWFRS

LOAD CASE A	WALL				ROOF			
	SURFACE 1	SURFACE 1E	SURFACE 4	SURFACE 4E	SURFACE 2	SURFACE 2E	SURFACE 3	SURFACE 3E
	35.0	43.6	-26.5	-35.5	-41.2	-59.2	-29.4	-38.8

LOAD CASE B	SIDE WALL				ROOF				GABLE WALL			
	WINDWARD		LEEWARD		WINDWARD		LEEWARD		WINDWARD		LEEWARD	
	SURFACE 1	SURFACE 1E	SURFACE 4	SURFACE 4E	SURFACE 2	SURFACE 2E	SURFACE 3	SURFACE 3E	SURFACE 5	SURFACE 5E	SURFACE 6	SURFACE 6E
	-29.8	-31.3	-29.8	-31.3	-41.2	-59.2	-26.0	-33.6	27.5	37.4	-22.3	-28.9

**TLE** TOP LINE ENGINEERING, LLC  
STRUCTURAL ENGINEERS  
William E. Neary, III  
SMP-51, SMI-79, ICC 5185040  
10649 Oakview Pointe Terrace  
Gotha, Florida 34734



1552 6TH ST., WINTER HAVEN, FL 33880  
(863)865-6502

WIND LOAD TABLES

DATE: 07/13/18  
SCALE: AS NOTED  
DRAWN BY: RD  
CHECKED BY: KMB

SHEET:

S-3

SHEET 3 OF 15

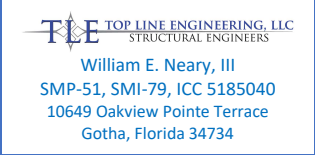


FASTENING SCHEDULE		
CONNECTION	FASTENING <sup>a, k</sup>	LOCATION
1. JOIST TO SILL OR GIRDER	3 - 8d COMMON (2½" X 0.131") 3 - 3" X 0.131" NAILS 3 - 3", 14 GAGE STAPLES	TOENAIL
2. BRIDGING TO JOIST	2 - 8d COMMON (2½" X 0.131") 2 - 3" X 0.131" NAILS 2 - 3", 14 GAGE STAPLES	TOENAIL EACH END
3. SOLE PLATE TO JOIST OR BLOCKING	16d (3½" X 0.135") AT 12" O.C. 3" X 0.131" NAILS AT 12" O.C. 3", 14 GAGE STAPLES AT 12" O.C.	FACE NAIL
4. SOLE PLATE TO JOIST OR BLOCKING AT BRACED WALL PANEL	3 - 16d (3½" X 0.135") AT 16" O.C. 4 - 3" X 0.131" NAILS AT 16" O.C. 4 - 3", 14 GAGE STAPLES AT 16" O.C.	FACE NAIL
5. TOP PLATE TO STUD	2 - 16d (3½" X 0.162") 3 - 3" X 0.131" NAILS 3 - 3", 14 GAGE STAPLES	END NAIL
6. STUD TO SOLE PLATE	4 - 8d COMMON (2½" X 0.131") 4 - 3" X 0.131" NAILS 4 - 3", 14 GAGE STAPLES	TOENAIL
	2 - 16d COMMON (3½" X 0.162") 3 - 3" X 0.131" NAILS 3 - 3", 14 GAGE STAPLES	END NAIL
7. DOUBLE STUDS	16d (3½" X 0.162") AT 24" O.C. 3" X 0.131" NAILS AT 16" O.C. 3", 14 GAGE STAPLES AT 16" O.C.	FACE NAIL
8. TOP PLATE TO TOP PLATE	16d (3½" X 0.162") AT 16" O.C. 3" X 0.131" NAILS AT 12" O.C. 3", 14 GAGE STAPLES AT 12" O.C.	FACE NAIL
	8 - 16d COMMON (3½" X 0.162") 12 - 3" X 0.131" NAILS 12 - 3", 14 GAGE STAPLES	FACE NAIL AT LAP SPLICE
9. BLOCKING BETWEEN JOISTS OR RAFTERS TO TOP PLATE	3 - 8d COMMON (2½" X 0.131") 3 - 3 X 0.131" NAILS 3 - 3", 14 GAGE STAPLES	TOENAIL
10. RIM JOIST TO TOP PLATE	8d (2½" X 0.131") AT 6" O.C. 3" X 0.131" NAILS AT 6" O.C. 3", 14 GAGE STAPLES AT 6" O.C.	TOENAIL
11. TOP PLATES, LAPS AND INTERSECTIONS	2 - 16d COMMON (3½" X 0.162") 3 - 3" X 0.131" NAILS 3 - 3", 14 GAGE STAPLES	FACE NAIL
12. CONTINUOUS HEADER (2) PIECES	16d COMMON (3½" X 0.162")	16" O.C. EACH EDGE, FACE NAIL
13. CEILING JOISTS TO PLATE	3 - 8d COMMON (2½" X 0.131") 3 - 3" X 0.131" NAILS 3 - 3", 14 GAGE STAPLES	TOENAIL
14. CONTINUOUS HEADER TO STUD	4 - 8d COMMON (2½" X 0.131")	TOENAIL
15. RAFTER TO PLATE	3 - 16d (3½" X 0.162") 4 - 3" X 0.131" NAILS 4 - 3", 14 GAGE STAPLES	TOENAIL
16. 1" DIAGONAL BRACE TO EACH STUD AND PLATE	2 - 8d COMMON (2½" X 0.131") 2 - 3" X 0.131" NAILS 3 - 3", 14 GAGE STAPLES	FACE NAIL
17. BUILT-UP CORNER STUDS	16d (3½" X 0.162") 3" X 0.131" NAILS 3" 14 GAGE STAPLES	12" O.C. FACE NAIL

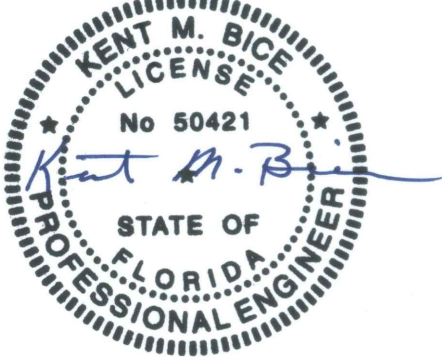
FASTENING SCHEDULE		
CONNECTION	FASTENING <sup>a, k</sup>	LOCATION
18. BUILT-UP GIRDER AND BEAMS	20d COMMON (4" X 0.192") at 32" O.C. 3" X 0.131" NAIL AT 24" O.C. 3" 14 GAGE STAPLE AT 24" O.C. AND	FACE NAIL AT TOP AND BOTTOM STAGGERED ON OPPOSITE SIDES
	2 - 20d COMMON (4" X 0.192") OR 3 - 3" X 0.131" NAIL OR 3 - 3" 14 GAGE STAPLE	FACE NAIL AT ENDS AND AT EACH SPLICE
19. COLLAR TIE TO RAFTER	3 - 10d COMMON (3" X 0.148") 4 - 3" X 0.131" NAILS 4 - 3" 14 GAGE STAPLES	FACE NAIL
20. ROOF RAFTER TO 2-BY RIDGE BEAM	3 - 10d COMMON (3½" X 0.148") 4 - 3" X 0.131" NAILS 4 - 3" 14 GAGE STAPLES	TOENAIL
21. JOIST TO BAND JOIST	3 - 16d COMMON ( 3½" X 0.162") 4 - 3" X 0.131" NAILS 4 - 3" 14 GAGE STAPLES	END NAIL
22. WOOD STRUCTURAL PANELS AND PARTICLEBOARD <sup>b</sup> , SUBFLOOR, ROOF AND WALL SHEATHING (TO FRAMING)	½" AND LESS 6d <sup>c, j</sup> 2⅜" X 0.113" NAIL <sup>i</sup> 1¾" X 16 GAGE <sup>m</sup> STAPLE 8d <sup>d</sup> OR 6d <sup>e</sup>	6" O.C. AT EDGES AND 12" O.C. AT INTERMEDIATE, 4" O.C. AT COMPONENT AND CLADDING EDGE STRIP # ZONE 3 [REFER TO FIGURE ON SHEET S-3]
	19/32" TO ¾" 2⅜" X 0.113" NAIL <sup>n</sup> 2" 16 GAGE <sup>n</sup> STAPLE	
SINGLE FLOOR, COMBINATION SUBFLOOR-UNDERLAYMENT TO FRAMING	7/8" TO 1" 8d <sup>c</sup> 1⅛" TO 1¼" 10d <sup>d</sup> OR 8d <sup>e</sup>	6" / 12" O.C. AT EDGES / INTERMEDIATE
	23. PANEL SIDING TO FRAMING ½" OR LESS 6d <sup>f</sup> 5/8" 8d <sup>f</sup>	
24. FIBERBOARD SHEATHING	1/2" NO. II GAGE ROOFING NAIL <sup>h</sup> 6d COMMON NAIL (2" x 0.113") NO. 16 GAGE STAPLE <sup>i</sup> 25/32" NO. II GAGE ROOFING NAIL <sup>h</sup> 8D COMMON NAIL (2 ½" x 0.131") NO 16 GAGE STAPLE <sup>i</sup>	3" / 6" O.C. AT EDGES / INTERMEDIATE FOR STRUCTURAL APPLICATIONS 6" / 12" O.C. AT EDGES / INTERMEDIATE FOR NON-STRUCTURAL APPLICATIONS

NOTES:

- a. COMMON OR BOX NAILS ARE PERMITTED TO BE USED EXCEPT WHERE OTHERWISE STATED.
- b. NAILS SPACED AT 6" O.C. AT EDGES, 12" AT INTERMEDIATE SUPPORTS EXCEPT 6" AT SUPPORTS WHERE SPANS ARE 48" OR MORE. NAILS FOR WALL SHEATHING ARE PERMITTED TO BE COMMON, BOX OR CASING.
- c. COMMON OR DEFORMED SHANK (6d - 2" x 0.113"; 8d - 2 ½" x 0.131"; 10d 3" x 0.148").
- d. COMMON (6d - 2" x 0.113"; 8d - 2 1/2" x 0.131"; 10d x 0.148").
- e. DEFORMED SHANK (6d - 2" x 0.113"; 8d - 2 1/2" x 0.131"; 10d 3" x 0.148").
- f. CORROSION-RESISTANT SIDING (6d - 1 7/8" x 0.106"; 8d 2 3/8" x 0.128") OR CASING (6d 2" x 0.099"; 8d 2 1/2" x 0.113") NAIL.
- g. FASTENERS SPACED 3" O.C. AT EXTERIOR EDGES AND 6" O.C. AT INTERMEDIATE SUPPORTS, WHEN USED AS STRUCTURAL SHEATHING. SPACING SHALL BE 6" O.C. ON THE EDGES AND 12" O.C. AT INTERMEDIATE SUPPORTS FOR NONSTRUCTURAL APPLICATIONS.
- h. CORROSION-RESISTANT ROOFING NAILS WITH 7/16" DIAMETER HEAD AND 1 ½" LENGTH FOR 1/2" SHEATHING AND 1 3/4" LENGTH FOR 25/32" SHEATHING.
- i. CORROSION-RESISTANT STAPLES WITH NOMINAL 7/16" CROWN OR 1" CROWN AND 1 1/4" LENGTH FOR 1/2" SHEATHING AND 1 1/2" LENGTH FOR 25/32" SHEATHING. PANEL SUPPORTS AT 16" (20" IF STRENGTH AXIS IS THE LONG DIRECTION OF THE PANEL, UNLESS OTHERWISE MARKED).
- j. FOR ROOF SHEATHING APPLICATIONS, 8d NAILS (2 1/2" x 0.113") ARE THE MINIMUM REQUIRED FOR WOOD STRUCTURAL PANELS.
- k. STAPLES SHALL HAVE A MINIMUM CROWN WIDTH OF 7/16'.
- l. FOR ROOF SHEATHING APPLICATIONS, FASTENERS SPACED 4" O.C. AT EDGES, 8" O.C. AT INTERMEDIATE SUPPORTS.
- m. FASTENERS SPACED 4" O.C. AT EDGES, 8" O.C. AT INTERMEDIATE SUPPORTS FOR SUBFLOOR AND WALL SHEATHING AND 3" O.C. AT EDGES, 6" AT INTERMEDIATE SUPPORTS FOR ROOF SHEATHING.
- n. FASTENERS SPACED 4" O.C. AT EDGES, 8" AT INTERMEDIATE SUPPORTS.



Engineer: Kent Bice  
FL License #: 50421  
COA# 30468



07/13/18

1552 6TH ST., WINTER HAVEN, FL 33880  
(863)865-6502

FASTENING SCHEDULE

DATE: 07/13/18

DRAWN BY: RD

SCALE: AS NOTED

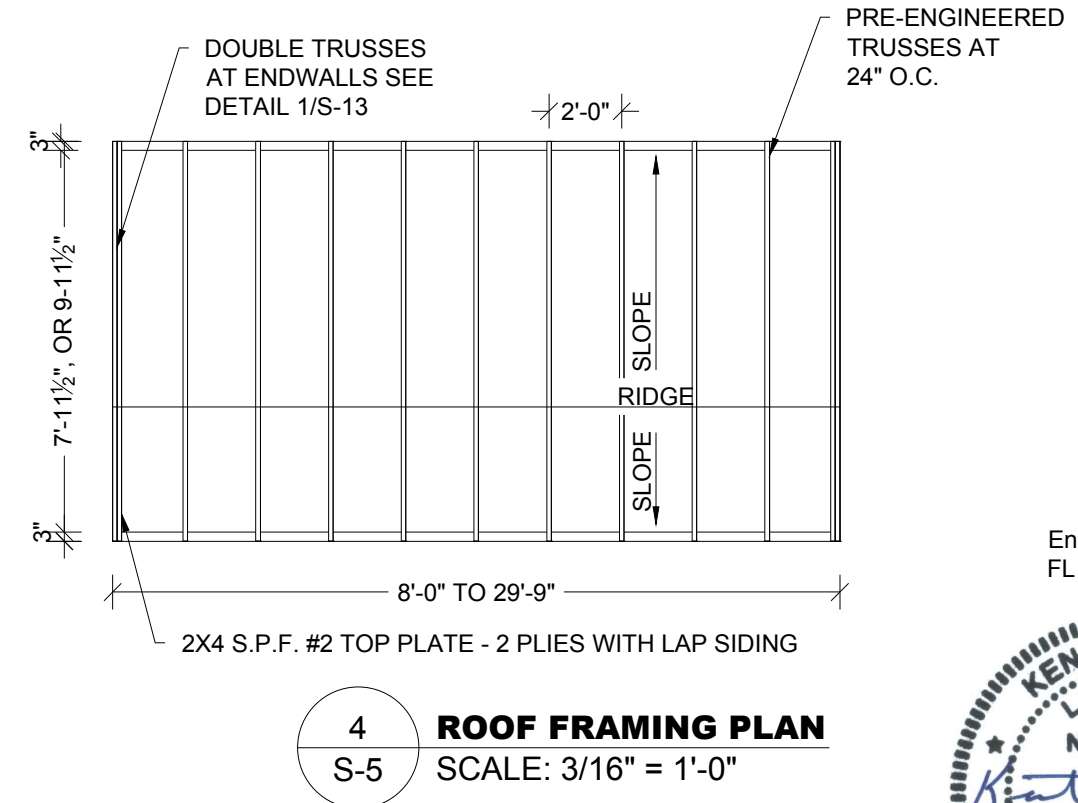
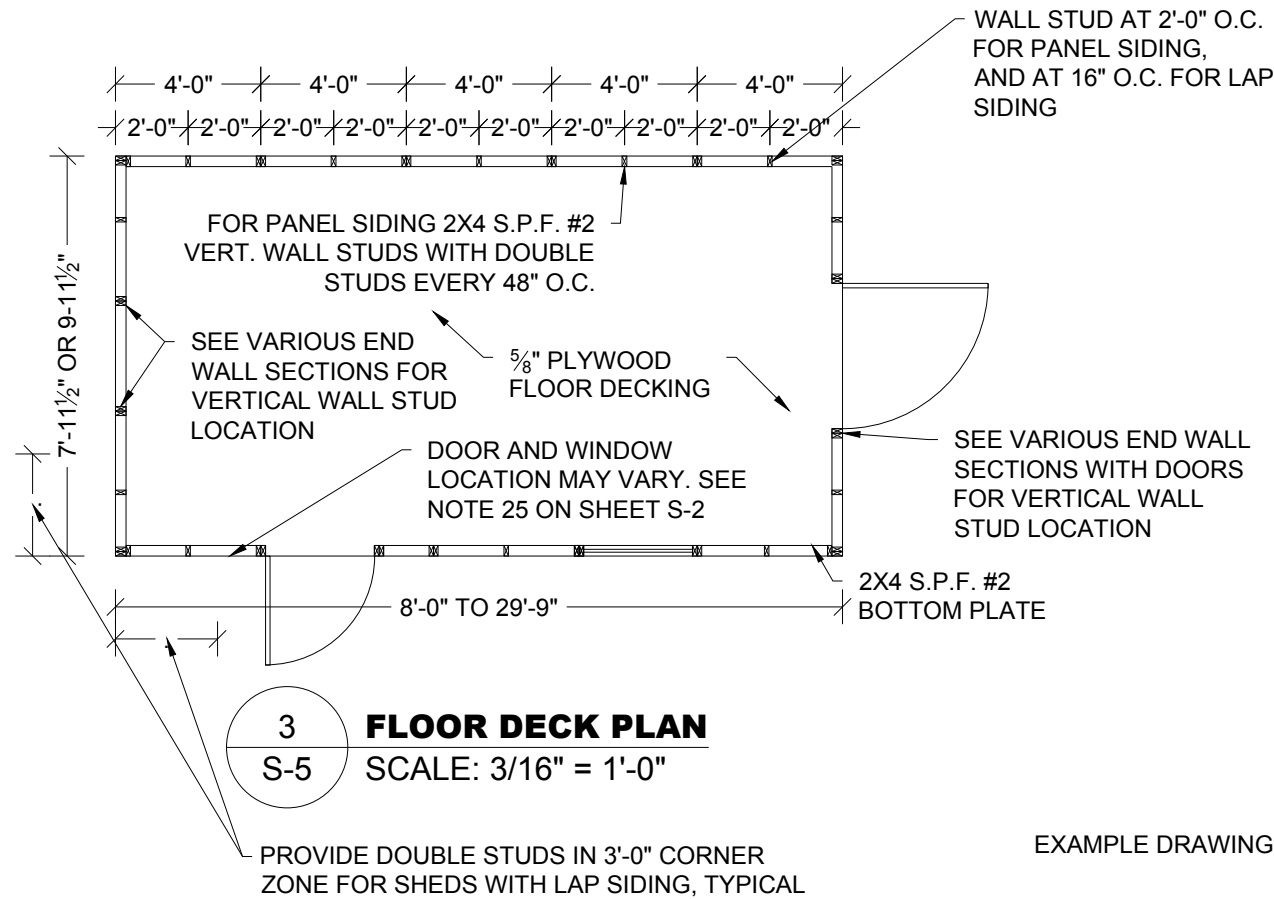
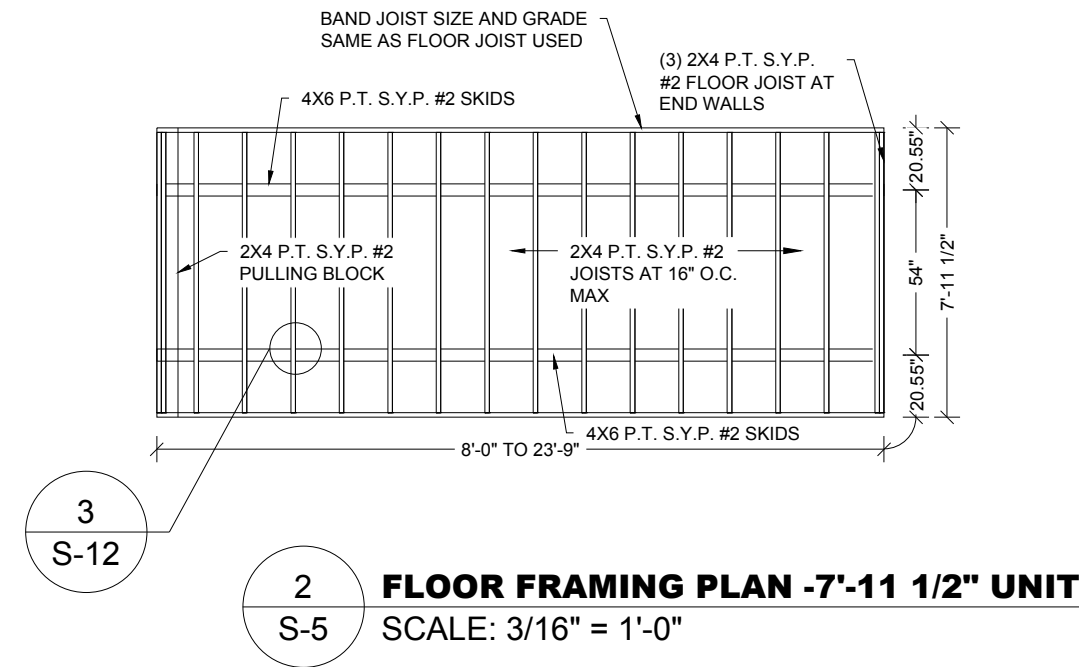
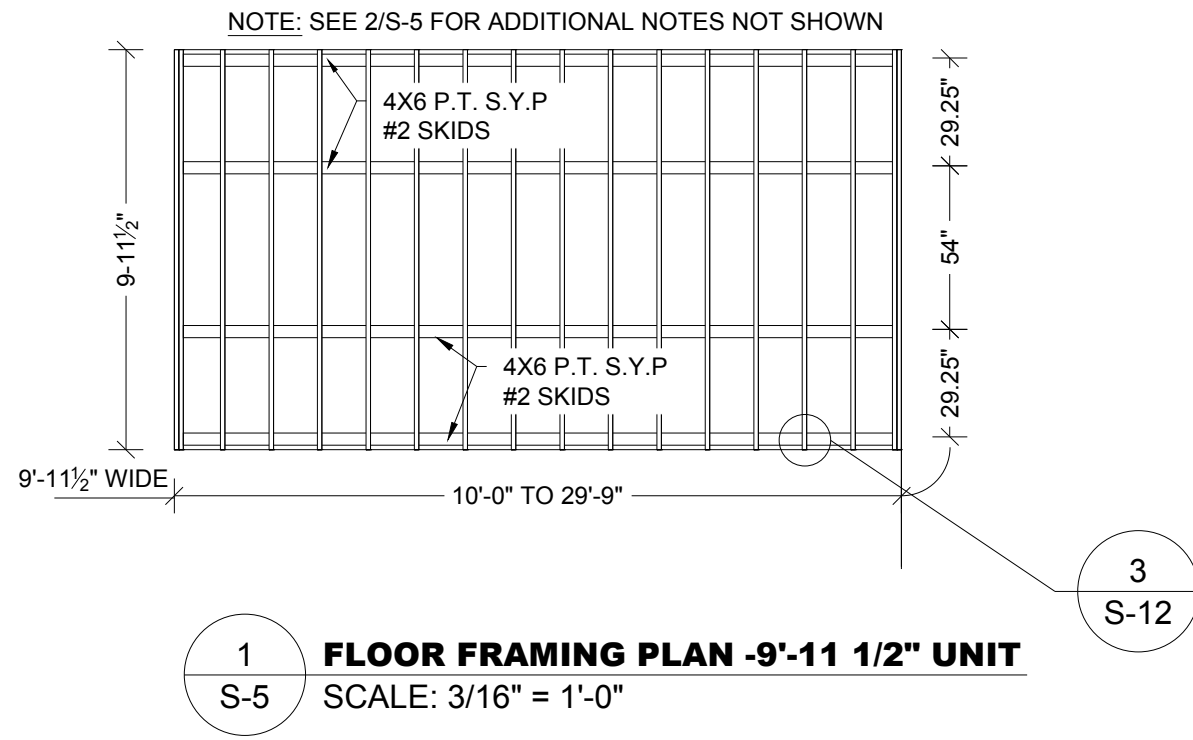
CHECKED BY: KMB

SHEET:

S-4

SHEET 4 OF 15

THESE PLANS WERE DESIGNED IN ACCORDANCE WITH THE 6TH EDITION, 2017 FLORIDA BUILDING CODE.



EXAMPLE DRAWINGS ARE OF A 20'-0" LENGTH UNIT

**TOP LINE ENGINEERING, LLC**  
STRUCTURAL ENGINEERS

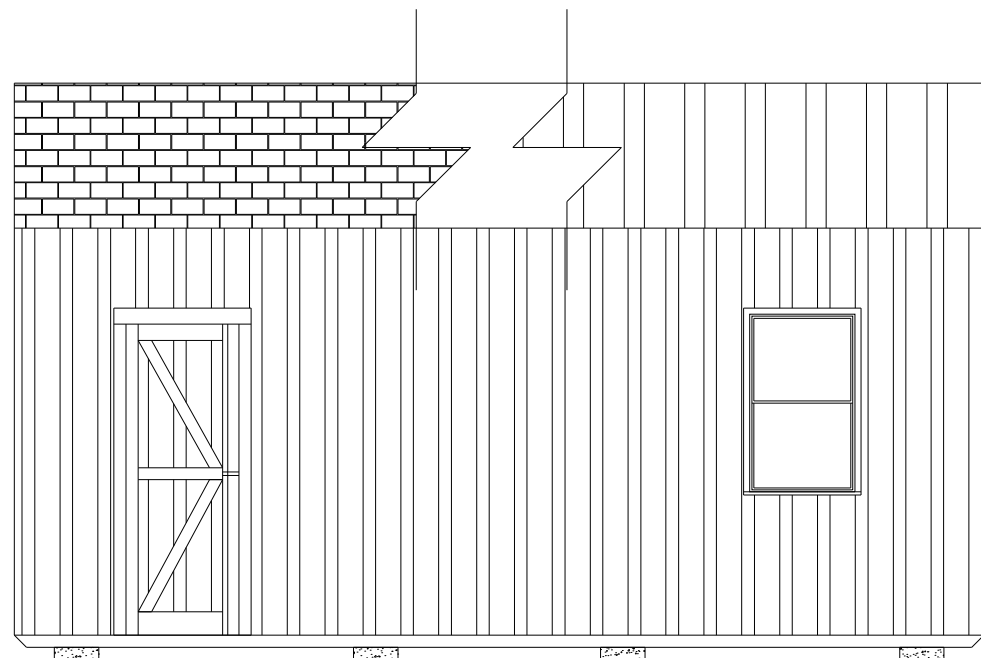
William E. Neary, III  
SMP-51, SMI-79, ICC 5185040  
10649 Oakview Pointe Terrace  
Gotha, Florida 34734



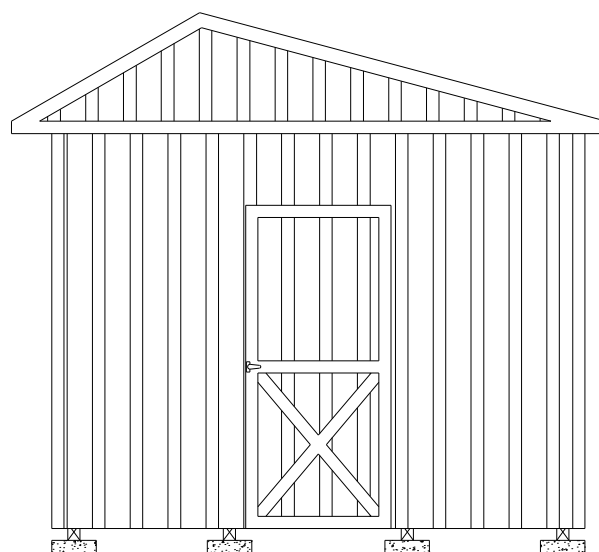
07/13/18  
1552 6TH ST., WINTER HAVEN, FL 33880  
(863)865-6502

FRAMING PLANS	
DATE: 07/13/18	DRAWN BY: RD
SCALE: AS NOTED	CHECKED BY: KMB

SHEET:  
**S-5**  
SHEET 5 OF 15

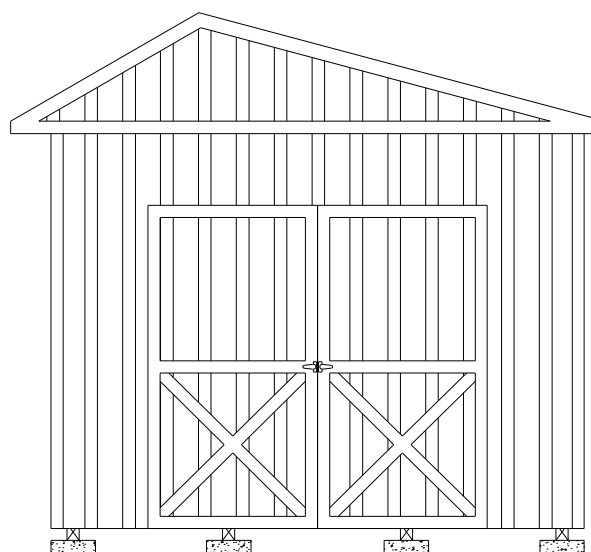


1  
S-6 **SIDE WALL ELEVATION WITH PANEL SIDING**  
SCALE: 1/4" = 1'-0"



10'-0" WIDE UNIT WITH 3'-0" DOOR

2  
S-6 **ENDWALL ELEVATION WITH PANEL SIDING**  
SCALE: 1/4" = 1'-0"



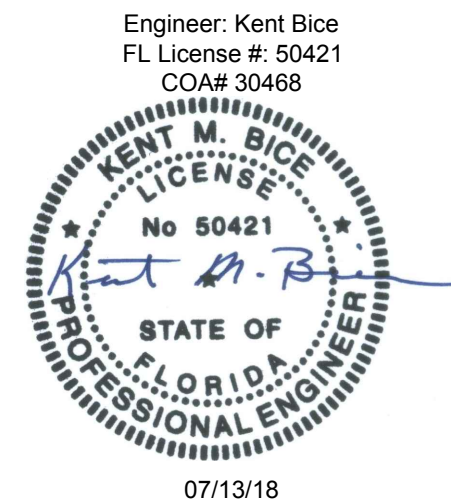
10'-0" WIDE UNIT WITH 7'-0" DOOR

SHEARWALL						
FLOOR WIDTH (FT)	OPENING WIDTH		MAX BUILDING LENGTH			
	LONG SIDE WALL	SHORT END WALL	19/32" T1-11 <sup>1</sup>	19/32" LP PANEL <sup>2</sup>	19/32" LP PANEL <sup>3</sup>	19/32" LP PANEL <sup>2</sup> + 7/16" RATED SHEATHING <sup>4</sup>
7'-11½"	2'-0", 3'-0", 4'-0", 8'-0"	2'-0", 3'-0", 4'-0"	23'-9"	23'-9"	23'-9"	23'-9"
9'-11½"	2'-0", 3'-0", 4'-0", 6'-0", 7'-0", 8'-0"	2'-0", 3'-0", 4'-0", 6'-0"	29'-9"	29'-9"	29'-9"	29'-9"
		7'-0"		24'-0"		

NOTES:

1. 19/32" T1-11 APA RATED SIDING 303-24 O.C. WITH 8D COMMON OR DEFORMED (0.131"X2-1/2") NAILS AT 6" O.C. IN FIELD AND 3" O.C. IN EDGES IN END WALL AND 6" O.C. EVERYWHERE IN SIDE WALL.
2. 19/32" LP SMARTSIDE STRAND SUBSTRATE PANEL SIDING WITH STAGGERED 8D COMMON OR DEFORMED (0.131"X2-1/2") NAILS AT 6" O.C. IN FIELD AND 3" O.C. IN EDGES IN END WALL AND 6" O.C. EVERYWHERE IN SIDE WALL.
3. 19/32" LP SMARTSIDE STRAND SUBSTRATE PANEL SIDING WITH STAGGERED 8D COMMON OR DEFORMED (0.131"X2-1/2") NAILS AT 6" O.C. IN FIELD AND 2" O.C. IN EDGES IN END WALL AND 6" O.C. EVERYWHERE IN SIDE WALL.
4. 7/16" APA STRUCTURAL RATED SHEATHING (OSB) WITH STAGGERED 8D COMMON OR DEFORMED (0.131"X2-1/2") NAILS AT 6" O.C. IN FIELD AND 4" O.C. IN EDGES IN END WALL AND 6" O.C. EVERYWHERE IN SIDE WALL.
5. WINDOWS AND DOORS MAY BE LOCATED IN EITHER THE SIDE WALL OR ENDWALL. DOORS ARE PERMITTED TO BE IN BOTH ENDWALLS OR ENDWALL AND SIDEWALL IF REQUESTED BY CUSTOMER. LIMITATIONS ON THE TOTAL DIMENSIONS SHALL BE BASED ON THE SHEAR WALL HEIGHT TO WIDTH RATIO OF 3.5:1 AND SHALL NOT EXCEED (2/3) OF THE TOTAL LENGTH OF BUILDING.
6. DOOR AND WINDOW SHALL BE LOCATED SUCH THAT THEY ARE AT LEAST 3'-3" APART.
7. EDGE NAILING SHALL BE PROVIDED AT TOP PLATE IN ALL END WALLS.
8. PROVIDE BLOCKING AT ALL UNSUPPORTED EDGES OF WALL SHEATHING.

**TLE** TOP LINE ENGINEERING, LLC  
STRUCTURAL ENGINEERS  
William E. Neary, III  
SMP-51, SMI-79, ICC 5185040  
10649 Oakview Pointe Terrace  
Gotha, Florida 34734



1552 6TH ST., WINTER HAVEN, FL 33880  
(863)865-6502

**ELEVATIONS AND  
SHEARWALL**

DATE: 07/13/18

DRAWN BY: RD

SCALE: AS NOTED

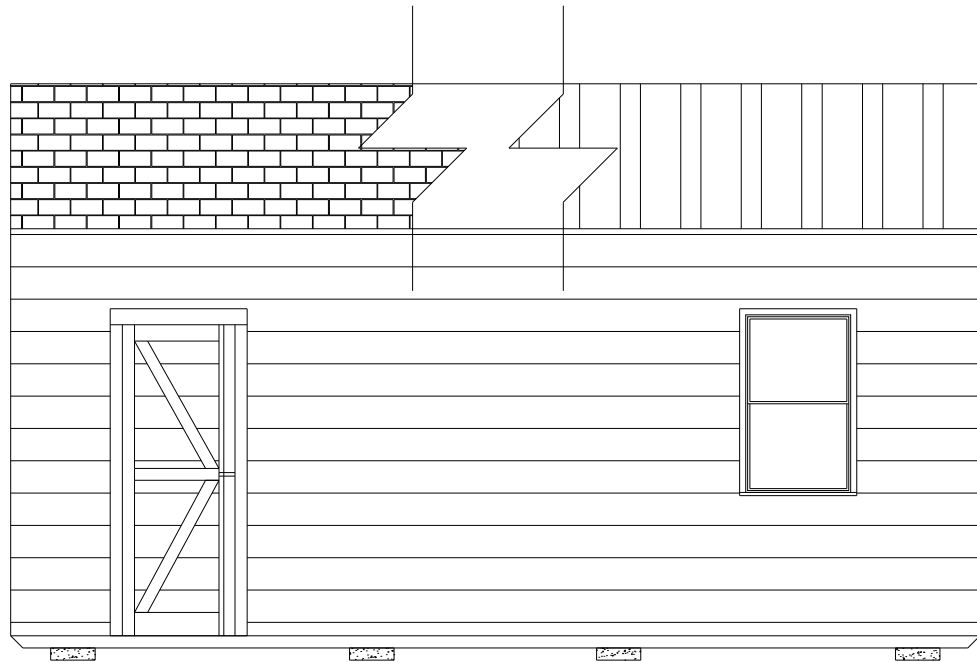
CHECKED BY: KMB

SHEET:

**S-6**

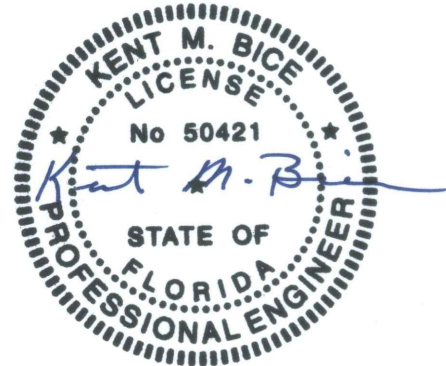
SHEET 6 OF 15



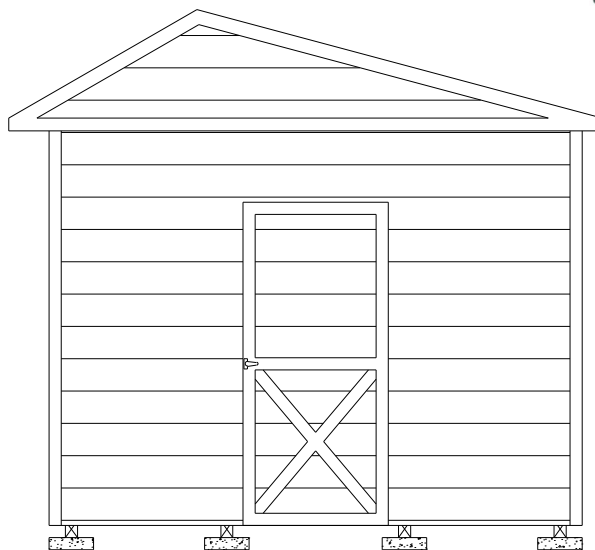


1 **SIDE WALL ELEVATION WITH LAP SIDING**  
S-6A SCALE: 1/4" = 1'-0"

Engineer: Kent Bice  
FL License #: 50421  
COA# 30468

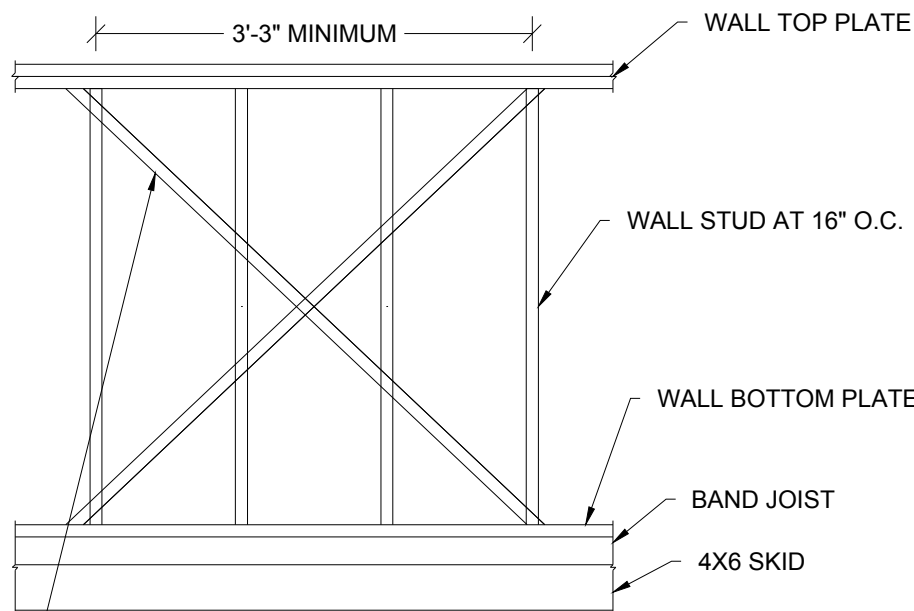


07/13/18



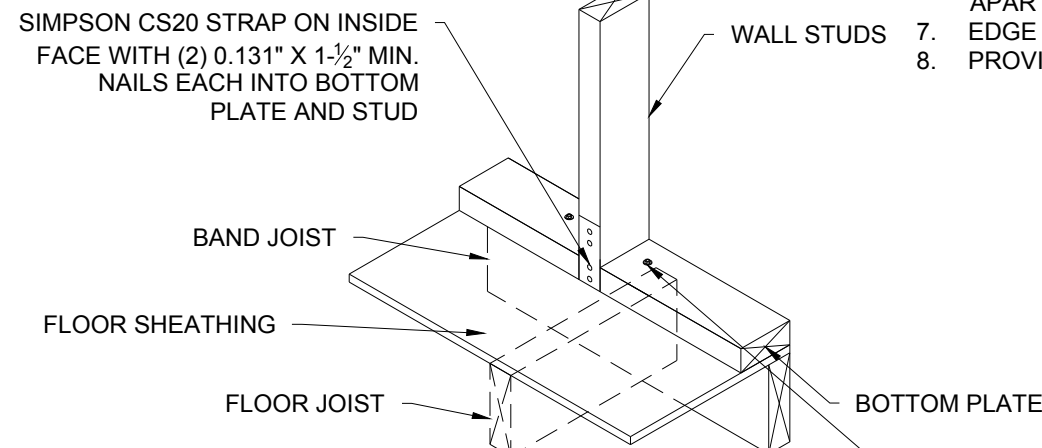
4 **ENDWALL ELEVATION WITH LAP SIDING**  
S-6A SCALE: 1/4" = 1'-0"

10'-0" WIDE UNIT WITH 3'-0" DOOR



(1) SIMPSON CS20 (33MIL X 1-1/4", GRADE 40 STEEL, G60 COATING) X-STRAP OR EQUIVALENT ON EACH FACE OF WALL STUD. ATTACH STRAPS TO WALL TOP & BOTTOM PLATES WITH (5) 0.131" x 2-1/4" NAILS STAGGERED. STRAP MAY BE WRAPPED AROUND WALL TOP & BOTTOM PLATES.  
ALTERNATE: 7/16" APA RATED SHEATHING ON OUTSIDE FACE OF WALL STUD FASTENED WITH 8d COMMON OR DEFORMED (0.131" x 2-1/2") NAILS AT 6" O.C. IN FIELD AND 3" O.C. AT EDGES.

2 **PARTIAL SIDE WALL FRAMING ELEVATION WITH LAP SIDING**  
S-6A SCALE: NTS



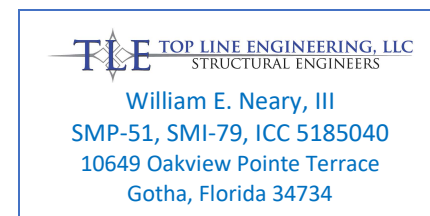
(2) 1/4" x 4" HEX LAG SCREWS WITHIN 3" ON EITHER SIDE OF STUD AT X-BRACE END LOCATIONS AND CENTERED THRU BAND JOIST. PREDRILL MAX. 1/4" DIA. HOLE THRU BOTTOM PLATE AND 0.15" DIA. HOLE THRU SHEATHING AND BAND JOIST.

3 **WALL STUD TIEDOWN FOR X-BRACE OPTION**  
S-6A SCALE: NTS

SHEARWALL WITH LP SMARTSIDE LAP SIDING <sup>1</sup>			
FLOOR WIDTH (FT)	OPENING WIDTH		MAX BUILDING LENGTH
	LONG SIDE WALL <sup>2</sup>	SHORT END WALL <sup>3,4</sup>	
7'-11 1/2"	2'-0", 3'-0", 4'-0", 6'-0", 8'-0"	2'-0", 3'-0", 4'-0"	23'-9"
9'-11 1/2"	2'-0", 3'-0", 4'-0", 6'-0", 7'-0", 8'-0"	2'-0", 3'-0", 4'-0", 6'-0", 7'-0"	29'-9"

**NOTES:**

- MIN. 0.45" THICK LP SMARTSIDE 12" BOLD PROFILES DOUBLE 5" FIBER SUBSTRATE LAP SIDING PER ICC-ES ESR 3090, TABLES 2A, 2B AND 2C
- ON LONG SIDE WALL, ATTACH LAP SIDING TO EACH WALL STUD WITH MINIMUM 8d SINKER NAILS (0.113" X 2-3/8") AT 3/8" FROM EACH END, AND 3 NAILS PER STUD -- 3" FROM TOP EDGE, IN THE MIDDLE AND 1-1/2" FROM BOTTOM EDGE. PROVIDE X-STRAP OR SHEATHING ON WALL PER 2/S-6A.
- ON SHORT END WALL, ATTACH LAP SIDING TO SHEATHING WITH MINIMUM 8d SINKER NAILS (0.113" X 2-3/8") AT 3/8" FROM EACH END, AND 3 NAILS PER 16" SPACING -- 3" FROM TOP EDGE, IN THE MIDDLE AND 1-1/2" FROM BOTTOM EDGE.
- ON SHORT END WALL WITHOUT AN OPENING, PROVIDE MIN. 7/16" APA RATED SHEATHING ON EXTERIOR FACE FASTENED TO STUDS WITH 8d COMMON OR DEFORMED (0.131" x 2-1/2") NAILS AT 6" O.C. IN FIELD AND EDGES. ON SHORT END WALL WITH AN OPENING, PROVIDE 19/32" APA RATED SHEATHING ON EXTERIOR FACE FASTENED TO STUDS WITH 8d COMMON OR DEFORMED (0.131" x 2-1/2") NAILS AT 6" O.C. IN FIELD AND 3" O.C. AT EDGES. ALTERNATE FOR SHORT END WALL WITH OPENING:  
ON EXTERIOR FACE OF TRUSS - PROVIDE PANEL SIDING PER SHEET S-6;  
ON EXTERIOR FACE OF WALL - PROVIDE LAP SIDING AND  
ON INTERIOR FACE OF WALL - PROVIDE 19/32" APA RATED SHEATHING.
- WINDOWS AND DOORS MAY BE LOCATED IN EITHER THE SIDE WALL OR ENDWALL. DOORS ARE PERMITTED TO BE IN BOTH ENDWALLS OR ENDWALL AND SIDEWALL IF REQUESTED BY CUSTOMER. LIMITATIONS ON THE TOTAL DIMENSIONS SHALL BE BASED ON THE SHEAR WALL HEIGHT TO WIDTH RATIO OF 3.5:1 AND SHALL NOT EXCEED (2/3) OF THE TOTAL LENGTH OF BUILDING.
- DOOR AND WINDOW SHALL BE LOCATED SUCH THAT THEY ARE AT LEAST 3'-3" APART.
- EDGE NAILING SHALL BE PROVIDED AT TOP PLATE IN ALL END WALLS.
- PROVIDE BLOCKING AT ALL UNSUPPORTED EDGES OF WALL SHEATHING.



1552 6TH ST., WINTER HAVEN, FL 33880  
(863)865-6502

**ELEVATIONS AND SHEARWALL**

DATE: 07/13/18

DRAWN BY: RD

SCALE: AS NOTED

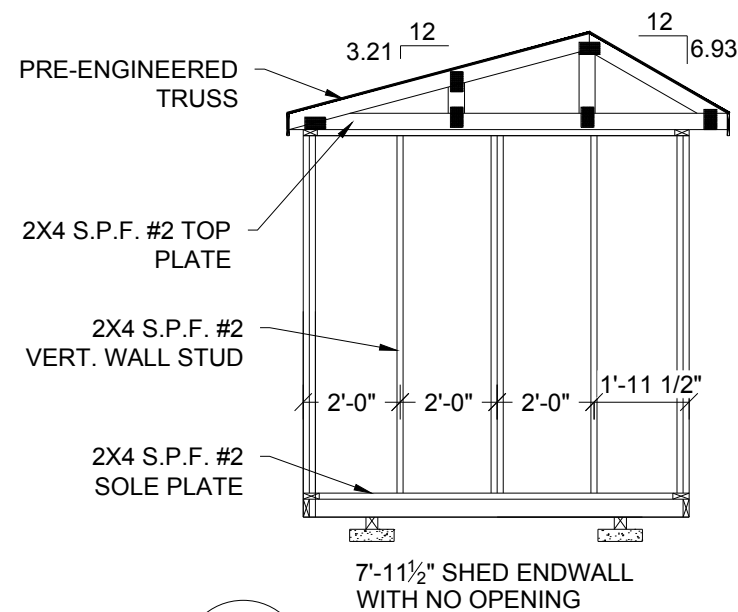
CHECKED BY: KMB

SHEET:

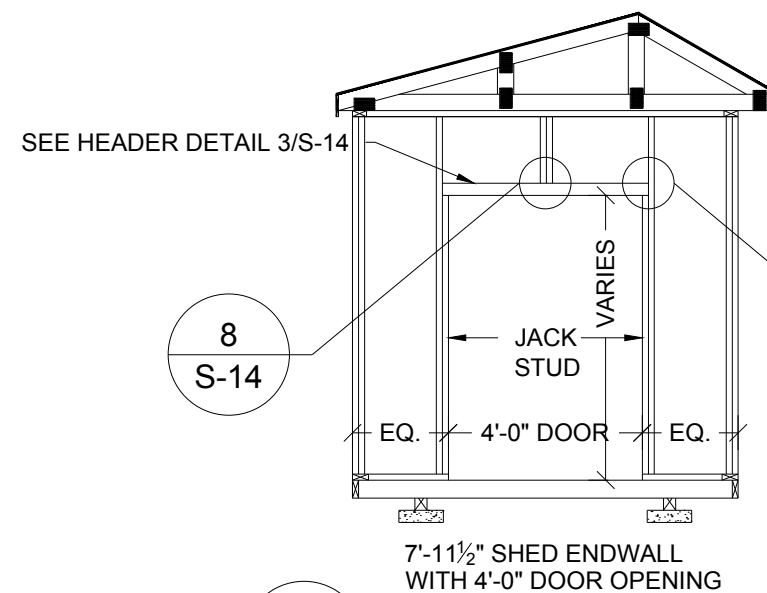
**S-6A**

SHEET 7 OF 15

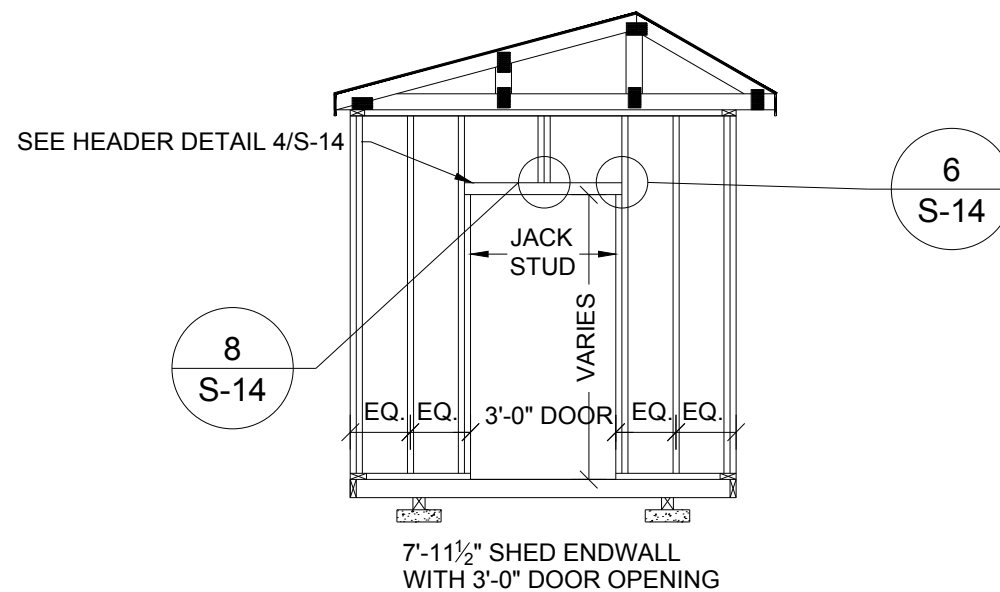
THESE PLANS WERE DESIGNED IN ACCORDANCE WITH THE 6TH EDITION, 2017 FLORIDA BUILDING CODE.



**1**  
S-7  
**FRAMING ELEVATION**  
SCALE: 1/4" = 1'-0"



**2**  
S-7  
**FRAMING ELEVATION**  
SCALE: 1/4" = 1'-0"

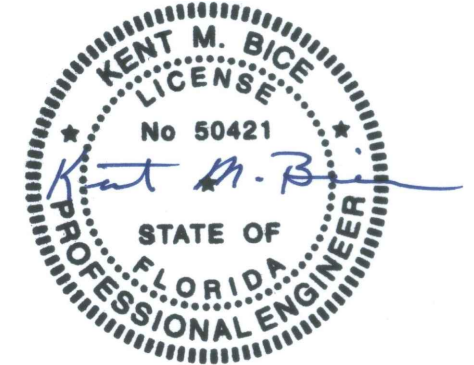


**3**  
S-7  
**FRAMING ELEVATION**  
SCALE: 1/4" = 1'-0"

**TLE** TOP LINE ENGINEERING, LLC  
STRUCTURAL ENGINEERS

William E. Neary, III  
SMP-51, SMI-79, ICC 5185040  
10649 Oakview Pointe Terrace  
Gotha, Florida 34734

Engineer: Kent Bice  
FL License #: 50421  
COA# 30468



07/13/18

1552 6TH ST., WINTER HAVEN, FL 33880  
(863)865-6502

**7'-11 1/2" SHED  
FRAMING ELEVATIONS**

DATE: 07/13/18

DRAWN BY: RD

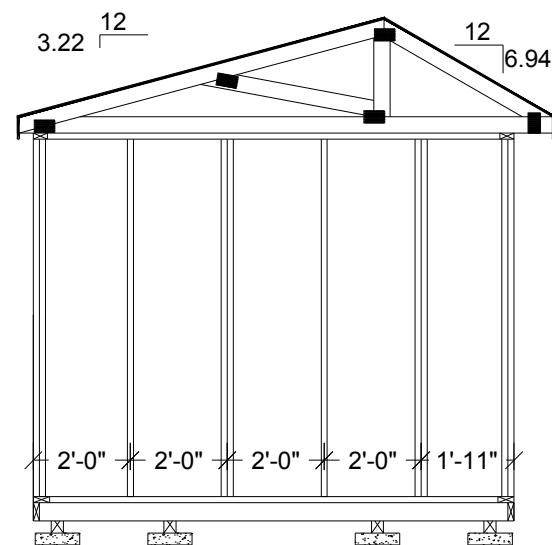
SCALE: AS NOTED

CHECKED BY: KMB

SHEET:

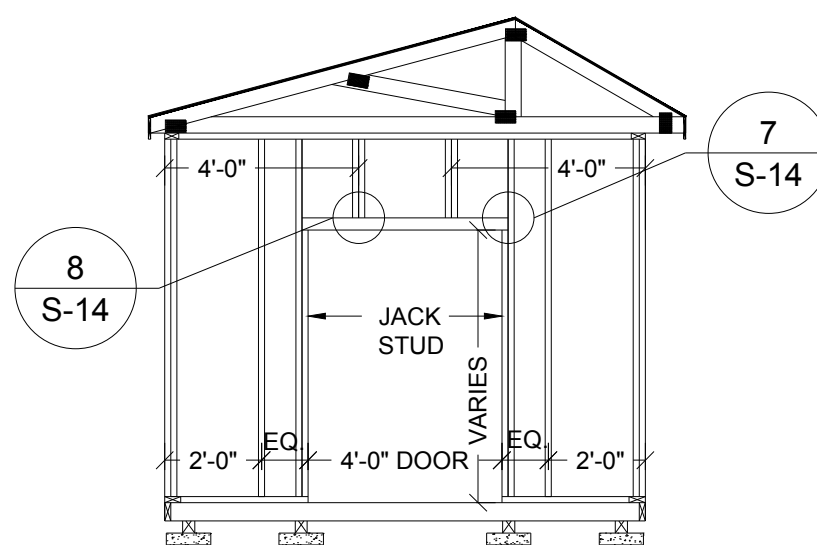
**S-7**

SHEET 8 OF 15



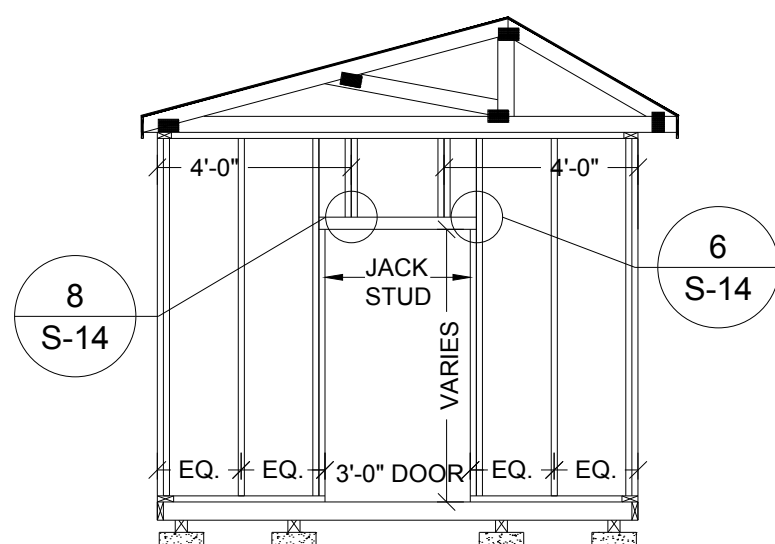
9'-11½" SHED ENDWALL  
WITH NO OPENING

**1 FRAMING ELEVATION**  
S-8 SCALE: 1/4" = 1'-0"



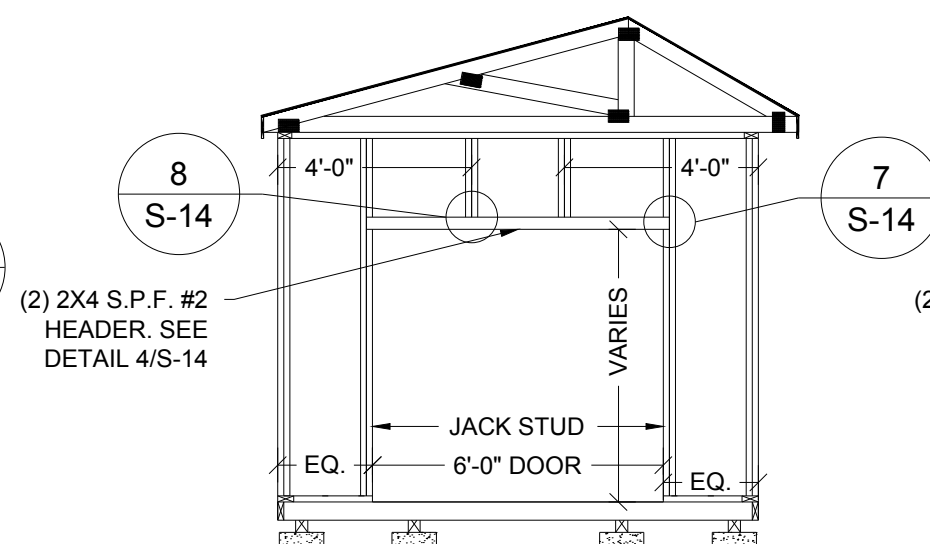
9'-11½" SHED ENDWALL  
WITH 4'-0" DOOR OPENING

**2 FRAMING ELEVATION**  
S-8 SCALE: 1/4" = 1'-0"



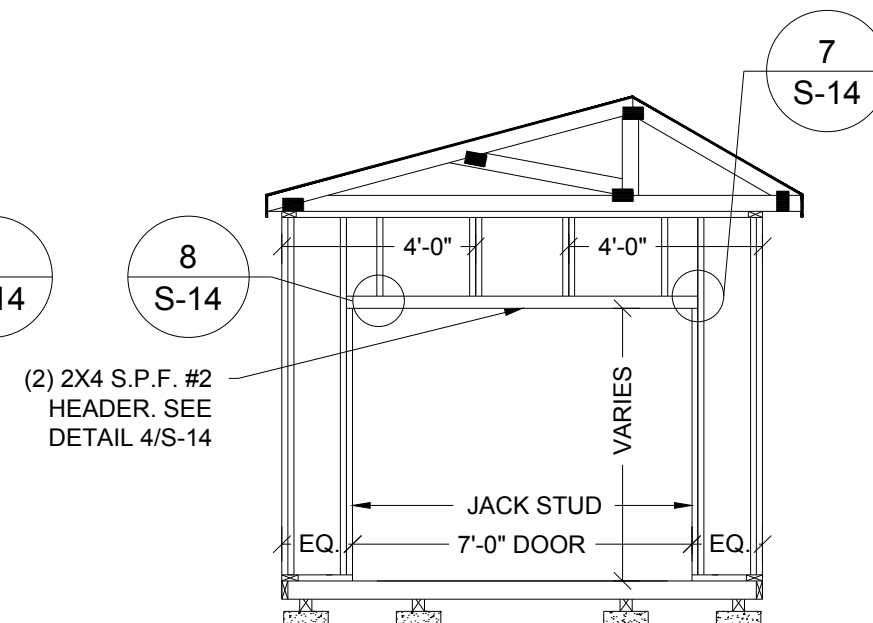
9'-11½" SHED ENDWALL  
WITH 3'-0" DOOR OPENING

**3 FRAMING ELEVATION**  
S-8 SCALE: 1/4" = 1'-0"



9'-11½" SHED ENDWALL  
WITH 6'-0" DOOR OPENING

**4 FRAMING ELEVATION**  
S-8 SCALE: 1/4" = 1'-0"



9'-11½" SHED ENDWALL  
WITH 7'-0" DOOR OPENING

**5 FRAMING ELEVATION**  
S-8 SCALE: 1/4" = 1'-0"

**TLE** TOP LINE ENGINEERING, LLC  
STRUCTURAL ENGINEERS

William E. Neary, III  
SMP-51, SMI-79, ICC 5185040  
10649 Oakview Pointe Terrace  
Gotha, Florida 34734

Engineer: Kent Bice  
FL License #: 50421  
COA# 30468

**KENT M. BICE**  
LICENSE  
No 50421  
STATE OF  
FLORIDA  
PROFESSIONAL ENGINEER

07/13/18

1552 6TH ST., WINTER HAVEN, FL 33880  
(863)865-6502

**9'-11 1/2" SHED  
FRAMING ELEVATIONS**

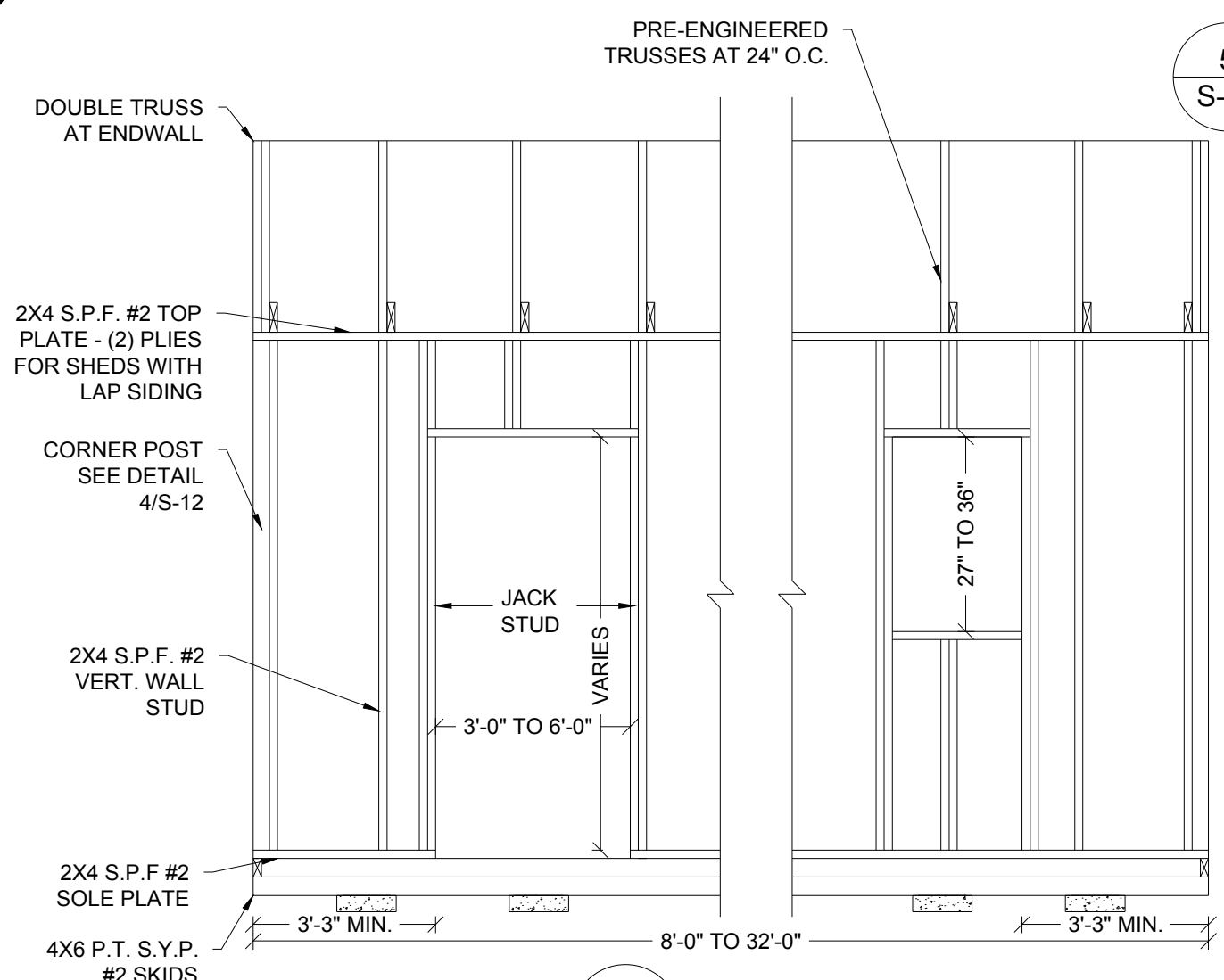
DATE: 07/13/18 DRAWN BY: RD  
SCALE: AS NOTED CHECKED BY: KMB

SHEET:

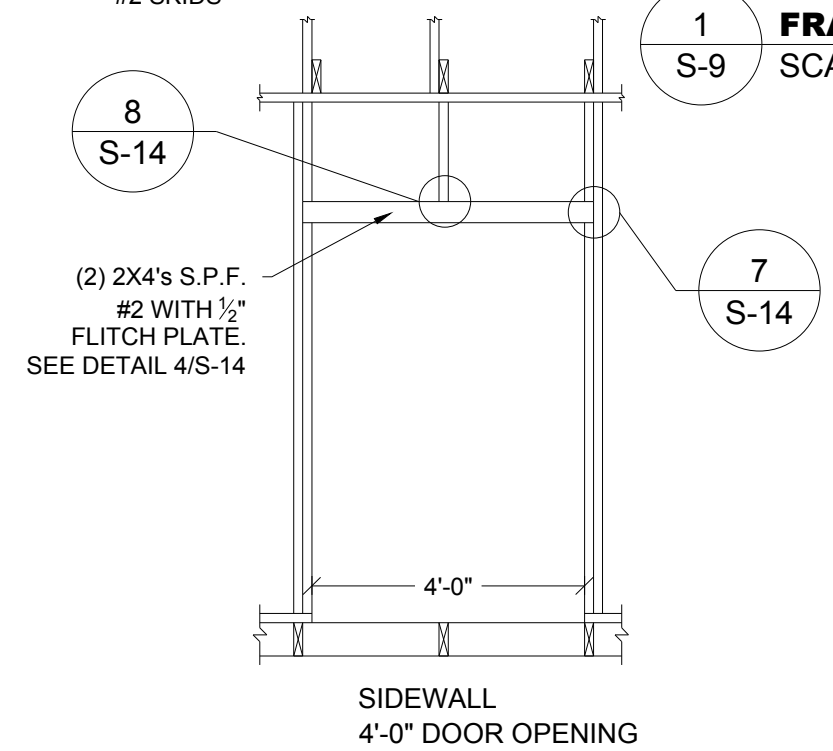
**S-8**

SHEET 9 OF 15

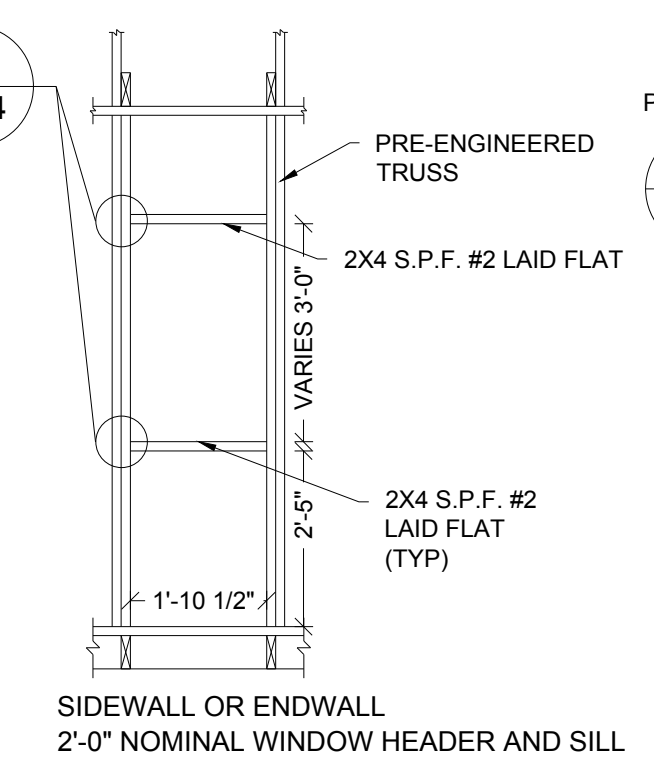
THESE PLANS WERE DESIGNED IN ACCORDANCE WITH THE 6TH EDITION, 2017 FLORIDA BUILDING CODE.



**1 FRAMING ELEVATION**  
S-9 SCALE: 3/8" = 1'-0"

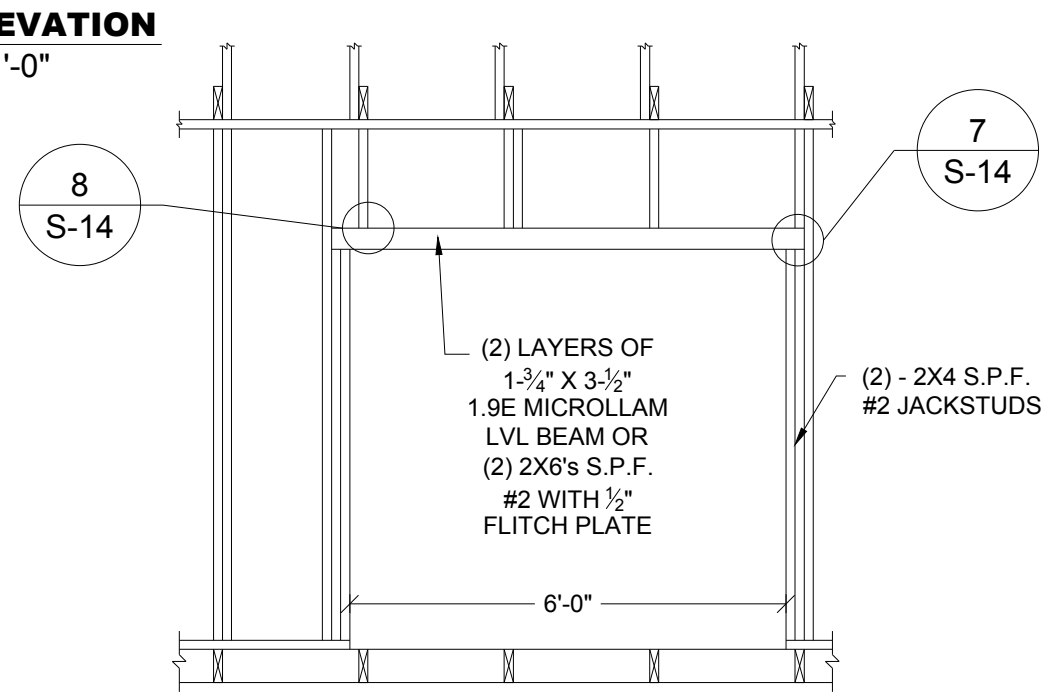


**4 FRAMING ELEVATION**  
S-9 SCALE: 3/8" = 1'-0"

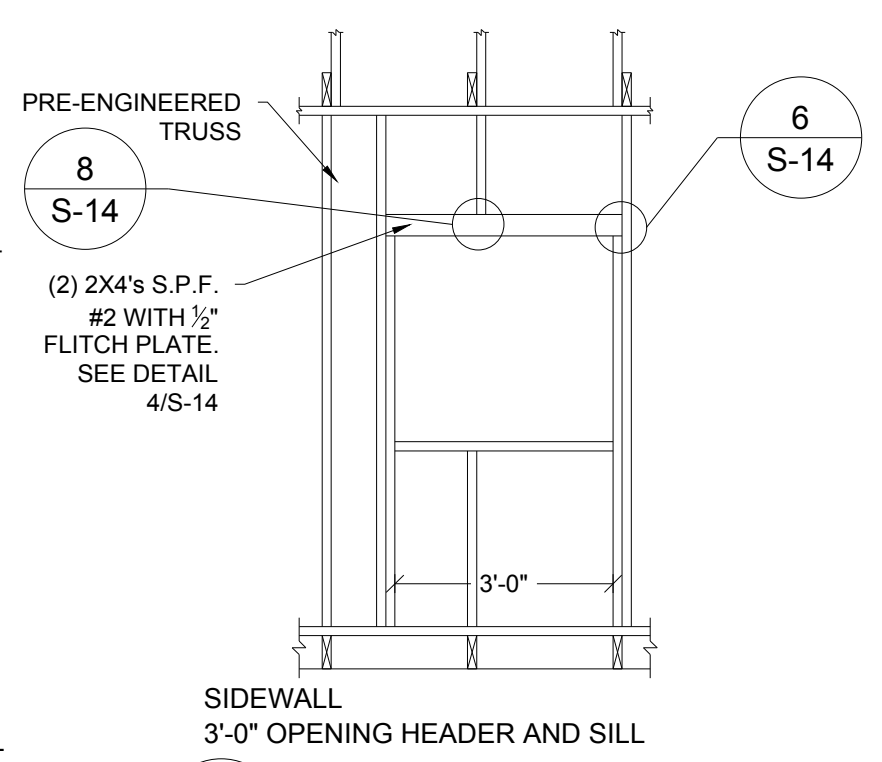


**2 FRAMING ELEVATION**  
S-9 SCALE: 3/8" = 1'-0"

NOTE:  
FOR 3'-0" WIDE DOOR IN SIDEWALL, HEADER IS FLATWISE 1-3/4" X 3-1/2" 1.9E MICROLLAM LVL UNDER 2X4 S.P.F. #2 TOP PLATE. SEE DETAIL 3/S-14.



**5 FRAMING ELEVATION**  
S-9 SCALE: 3/8" = 1'-0"

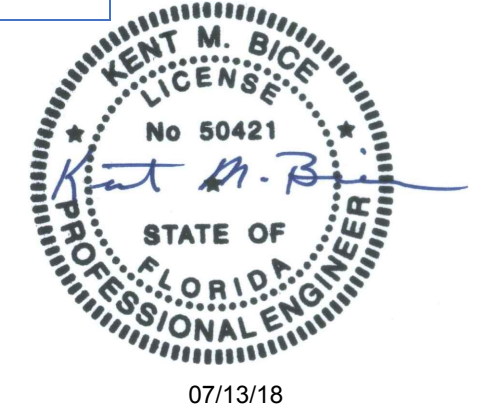


**3 FRAMING ELEVATION**  
S-9 SCALE: 3/8" = 1'-0"

NOTE:  
MAX. OPENING ON SIDEWALL MAY BE INCREASED TO 8'-0" IF (A) BUILDING LENGTH IS GREATER THAN 16'-0" AND (B) CRITERIA IN NOTES 3 AND 4 FOR SHEARWALL FROM SHEET S-6 ARE MET. HEADER SHALL BE (2) 2X4 S.P.F. #2 MIN.

**TOP LINE ENGINEERING, LLC**  
STRUCTURAL ENGINEERS  
William E. Neary, III  
SMP-51, SMI-79, ICC 5185040  
10649 Oakview Pointe Terrace  
Gotha, Florida 34734

Engineer: Kent Bice  
FL License #: 50421  
COA# 30468



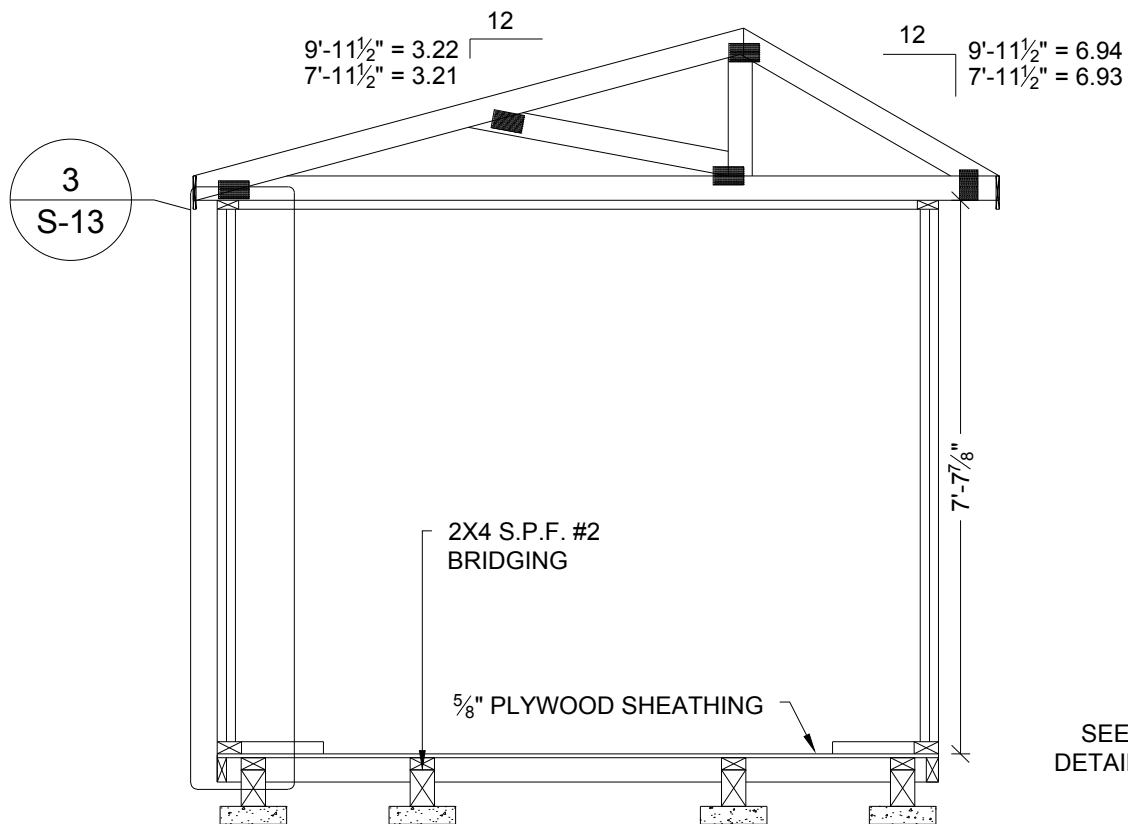
07/13/18

1552 6TH ST., WINTER HAVEN, FL 33880  
(863)865-6502

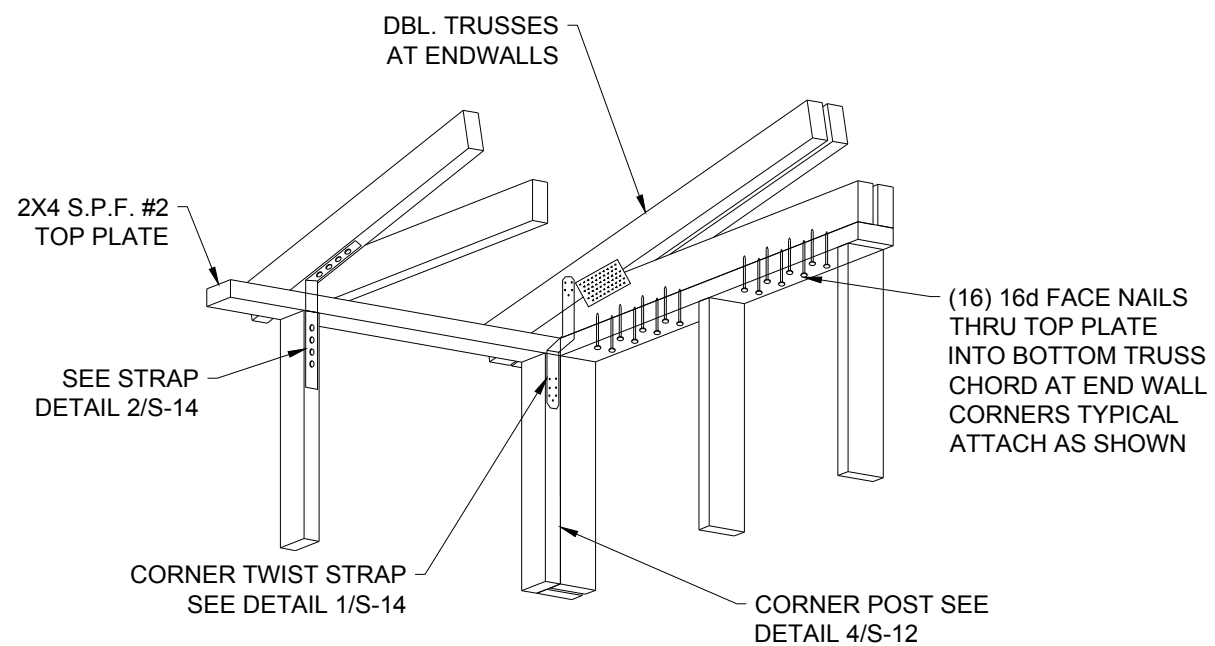
SIDE WALL ELEVATION	
DATE: 07/13/18	DRAWN BY: RD
SCALE: AS NOTED	CHECKED BY: KMB

SHEET:  
**S-9**  
SHEET 10 OF 15

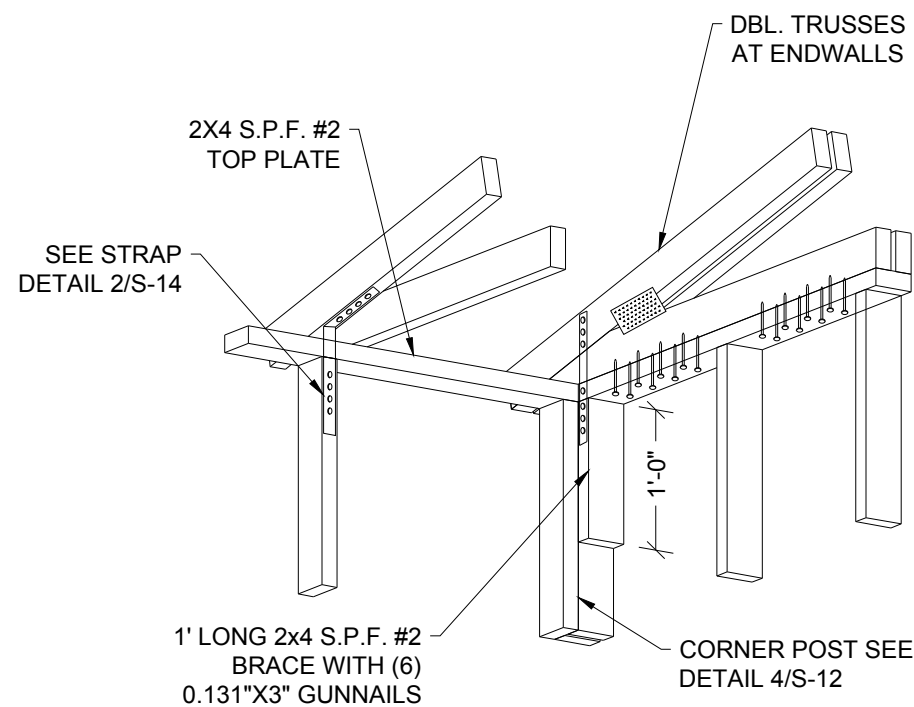




**1 CROSS SECTION**  
S-10 SCALE: 3/8" = 1'-0"  
EXAMPLE IS OF A 9'-11 1/2" UNIT



**2 CORNER DETAIL**  
S-10 SCALE: 3/8" = 1'-0"



**3 ALTERNATE CORNER DETAIL**  
S-10 SCALE: 3/8" = 1'-0"

**TLE TOP LINE ENGINEERING, LLC**  
STRUCTURAL ENGINEERS  
William E. Neary, III  
SMP-51, SMI-79, ICC 5185040  
10649 Oakview Pointe Terrace  
Gotha, Florida 34734

Engineer: Kent Bice  
FL License #: 50421  
COA# 30468  
  
07/13/18

1552 6TH ST., WINTER HAVEN, FL 33880  
(863)865-6502

**CROSS SECTIONS**

DATE: 07/13/18

DRAWN BY: RD

SCALE: AS NOTED

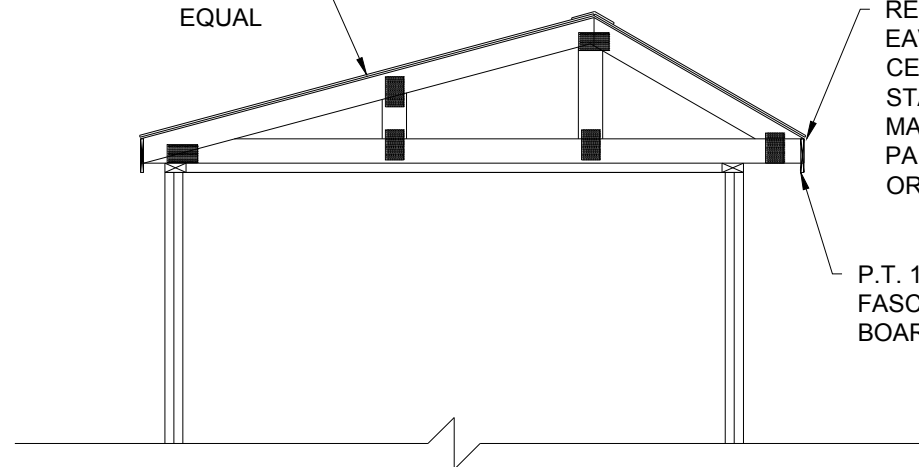
CHECKED BY: KMB

SHEET:

**S-10**

SHEET 11 OF 15

29 GA. PANEL-LOC  
PLUS ROOF PANEL  
BY CENTRAL STATES  
MANUFACTURING OR  
EQUAL

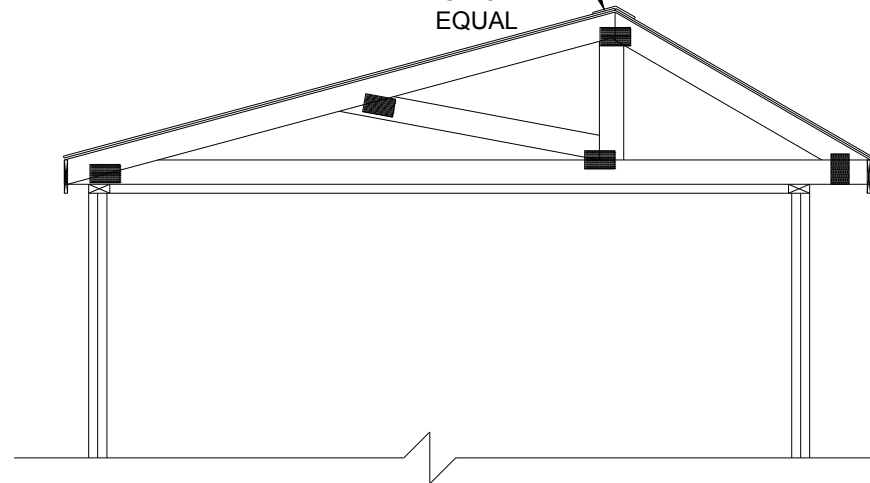


7'-11½" WIDE  
OPTIONAL METAL ROOF

1  
S-11

**CROSS SECTION**  
SCALE: 3/8" = 1'-0"

RESIDENTIAL  
RIDGE CAP BY  
CENTRAL STATES  
MANUFACTURING  
PART# RRCP OR  
EQUAL



9'-11½" WIDE  
OPTIONAL METAL ROOF

2  
S-11

**CROSS SECTION**  
SCALE: 3/8" = 1'-0"

**TLE** TOP LINE ENGINEERING, LLC  
STRUCTURAL ENGINEERS

William E. Neary, III  
SMP-51, SMI-79, ICC 5185040  
10649 Oakview Pointe Terrace  
Gotha, Florida 34734

Engineer: Kent Bice  
FL License #: 50421  
COA# 30468



07/13/18

1552 6TH ST., WINTER HAVEN, FL 33880  
(863)865-6502

**CROSS SECTIONS**

DATE: 07/13/18

DRAWN BY: RD

SCALE: AS NOTED

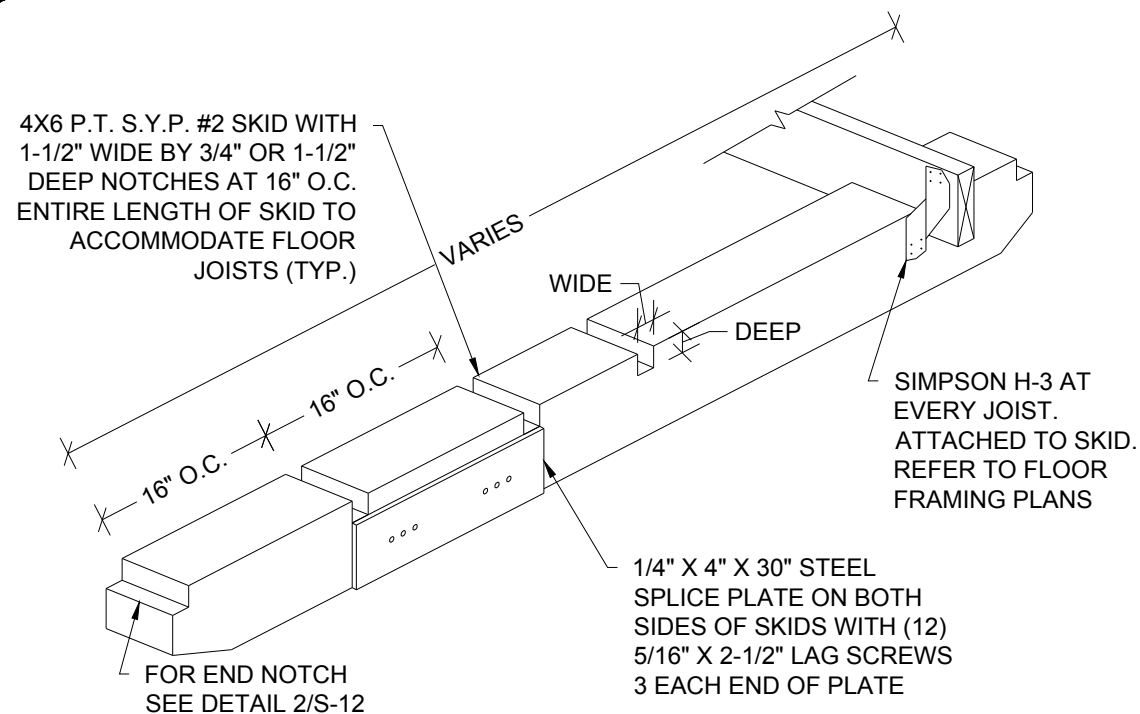
CHECKED BY: KMB

SHEET:

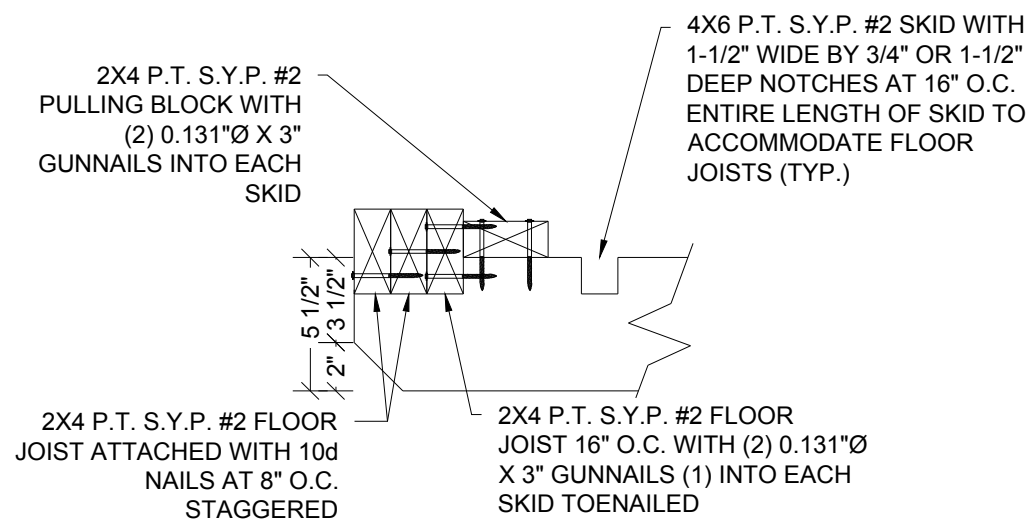
**S-11**

SHEET 12 OF 15

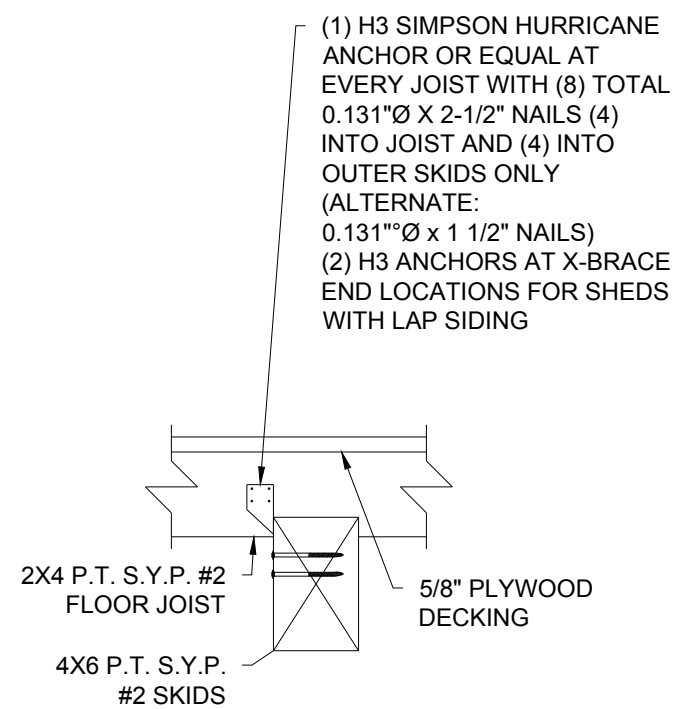
THESE PLANS WERE DESIGNED IN ACCORDANCE WITH THE 6TH EDITION, 2017 FLORIDA BUILDING CODE.



**1 ISOMETRIC SKID DETAIL**  
S-12 SCALE: N.T.S.



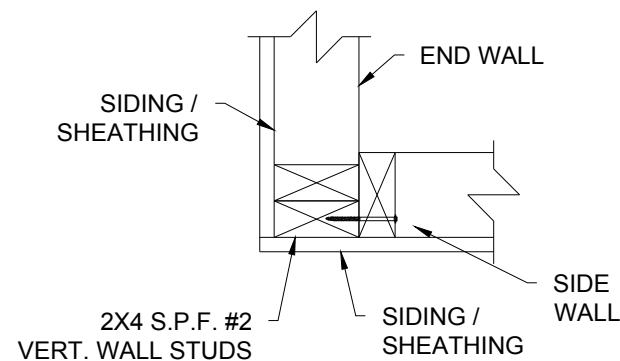
**2 END WALL JOIST DETAIL**  
S-12 SCALE: 1-1/2" = 1'-0"



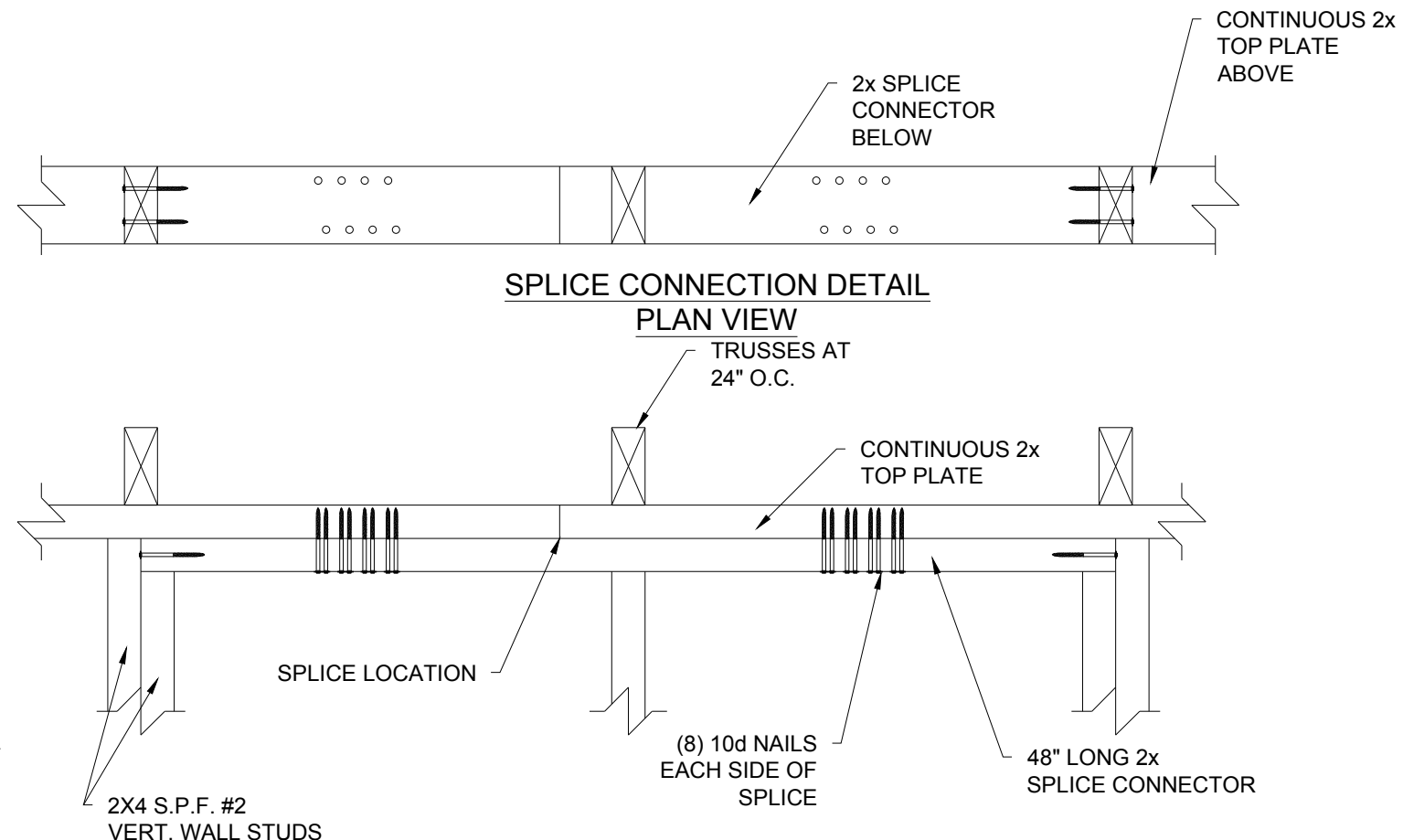
**3 SKID CONNECTION DETAIL**  
S-12 SCALE: 1-1/2" = 1'-0"

**TLE TOP LINE ENGINEERING, LLC**  
STRUCTURAL ENGINEERS

William E. Neary, III  
SMP-51, SMI-79, ICC 5185040  
10649 Oakview Pointe Terrace  
Gotha, Florida 34734



**4 CORNER CONNECTION DETAIL**  
S-12 SCALE 1-1/2" = 1'-0"



**5 SPLICE CONNECTION DETAIL**  
S-12 SCALE: 1-1/2" = 1'-0"

Engineer: Kent Bice  
FL License #: 50421  
COA# 30468

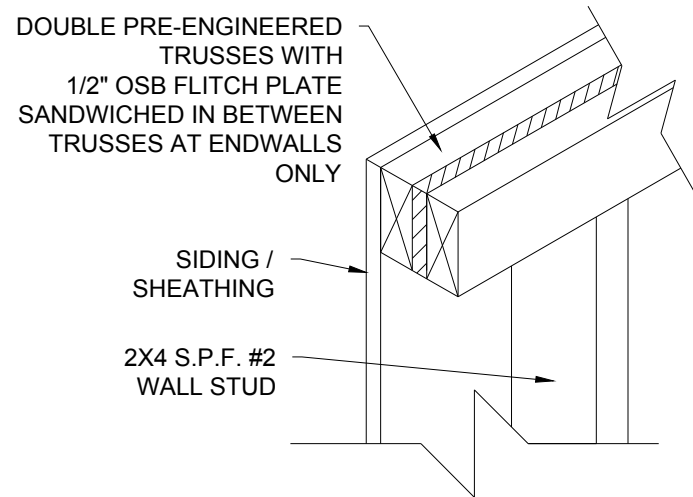
**KENT M. BICE**  
LICENSE  
No 50421  
STATE OF FLORIDA  
PROFESSIONAL ENGINEER

07/13/18

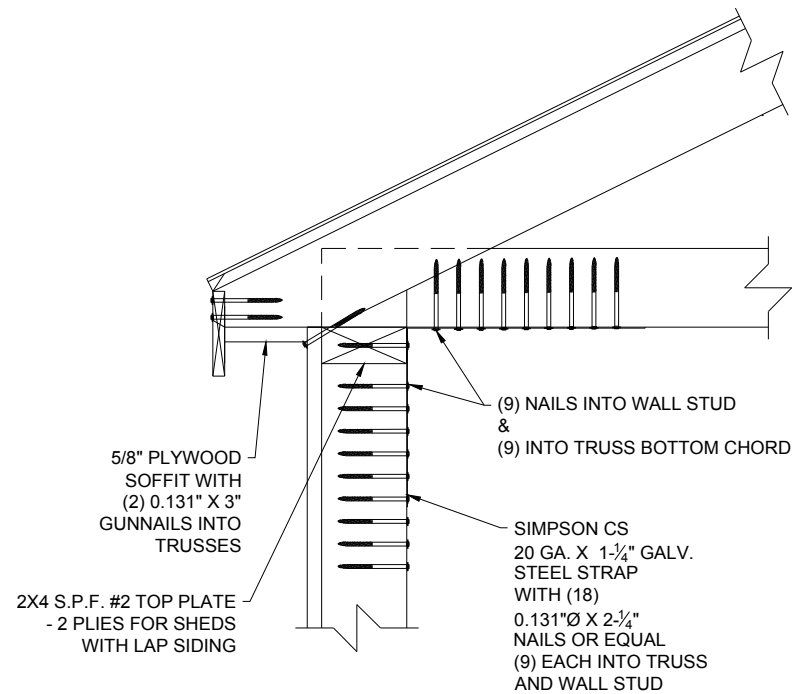
1552 6TH ST., WINTER HAVEN, FL 33880  
(863)865-6502

DETAILS	
DATE: 07/13/18	DRAWN BY: RD
SCALE: AS NOTED	CHECKED BY: KMB

SHEET:  
**S-12**  
SHEET 13 OF 15

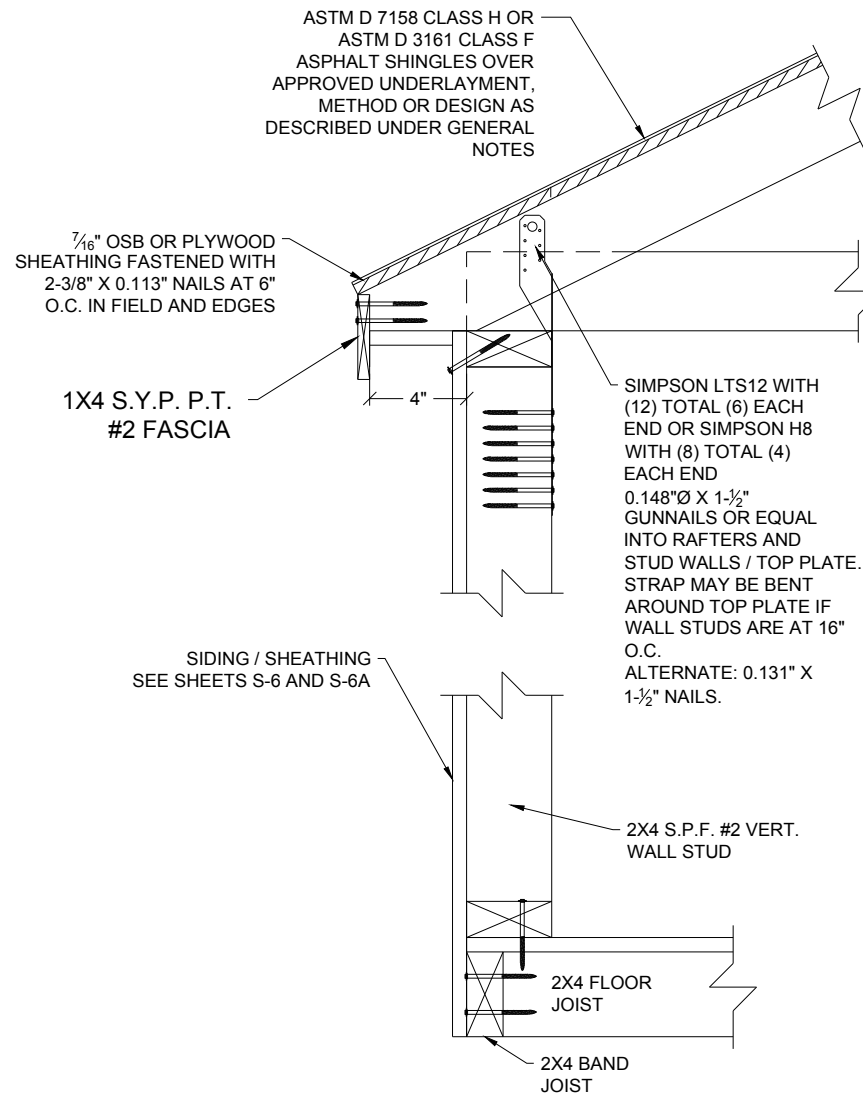


**1**  
**S-13** **DOUBLE TRUSS DETAIL**  
SCALE: 1-1/2" = 1'-0"



**2**  
**S-13** **WALL STUD TO RAFTER FASTENING**  
SCALE: 1-1/2" = 1'-0"

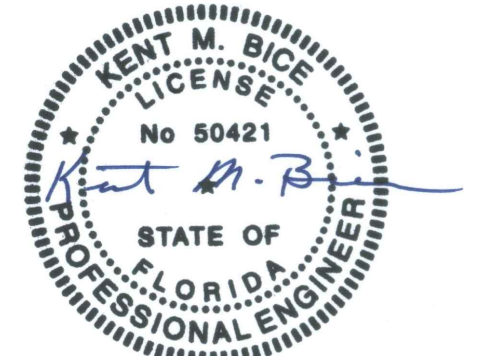
**NOTE:**  
**FOR ALL FASTENING OF FRAMING MEMBERS**  
**NOT NOTED ON THIS SHEET, REFER TO**  
**FASTENING SCHEDULE ON SHEET S-4.**



**3**  
**S-13** **ALTERNATE WALL STUD TO**  
**RAFTER AND FLOOR FASTENING DETAIL**  
SCALE: 1-1/2" = 1'-0"

**TLE** TOP LINE ENGINEERING, LLC  
STRUCTURAL ENGINEERS  
William E. Neary, III  
SMP-51, SMI-79, ICC 5185040  
10649 Oakview Pointe Terrace  
Gotha, Florida 34734

Engineer: Kent Bice  
FL License #: 50421  
COA# 30468



07/13/18

1552 6TH ST., WINTER HAVEN, FL 33880  
(863)865-6502

**DETAILS**

DATE: 07/13/18

DRAWN BY: RD

SCALE: AS NOTED

CHECKED BY: KMB

SHEET:

**S-13**

SHEET 14 OF 15



18 GA. GALVANIZED STEEL WITH  
(12) TOTAL (6) EACH END  
0.148"Ø X 1-1/2" NAILS OR EQUAL INTO  
RAFTERS AND STUD WALLS

**1 SIMPSON STRAP DETAIL**  
S-14 SCALE: 3" = 1'-0"

NOTE: USED ON EVERY  
WALL STUD TO  
CONNECT WALL TO  
ROOF TRUSS

SIMPSON CS20 20 GA X 1-1/4"  
GALV. STEEL STRAP WITH  
(18) 0.131"Ø X 2-1/4" NAILS  
OR EQUAL (9) INTO  
RAFTERS AND (9) INTO  
STUD WALL

**2 STRAP DETAIL**  
S-14 SCALE: 3" = 1'-0"

FOR MAX. 4'-0" WIDE X 5'-10" DEEP OPENINGS  
IN SIDE WALL - (2) 2X4 S.P.F. #2 WITH 1/2"  
PLYWOOD FILLER.  
FOR MAX. 6'-0" WIDE X 5'-10" DEEP OPENINGS  
IN SIDE WALL - (2) 2X6 S.P.F. #2 WITH 1/2"  
PLYWOOD FILLER OR (2) 1-3/4" X 3-1/2" 1.9E  
MICROLLAM LVL  
FOR OPENINGS IN END WALL:  
(2) 2X4 S.P.F. #2 WITH 1/2" PLYWOOD FILLER.

SIMPSON CS20 20GA. X 1-1/4" STRAP  
WRAPPED OVER HEADER. ATTACH  
STRAP TO EACH SIDE OF JACK STUD  
WITH 0.131"Ø GUNNAILS:  
(3) NAILS FOR UP TO 3'-0" WIDE OPENINGS  
(6) NAILS FOR UP TO 6'-0" WIDE OPENINGS  
(9) NAILS FOR UP TO 8'-0" WIDE OPENINGS

**7 HEADER WITH STRAP**  
S-14 SCALE: N.T.S.

Note:  
FOR MAX. 6'-0" WIDE X 5'-10"  
DEEP OPENING ON SIDE WALL.  
AND MAX. 8'-0" WIDE X 6'-8"  
DEEP OPENING ON END WALL.

2X4 S.P.F. #2 TOP PLATE  
FOR MAX. 3'-0" WIDE OPENING:  
2X4 S.P.F. #2 IN END WALL.  
1-3/4" X 3-1/2" 1.9E MICROLLAM  
LVL IN SIDE WALL

**3 HEADER SECTION**  
S-14 SCALE: 3" = 1'-0"

1/2" FLITCH  
PLATE

**4 HEADER SECTION**  
S-14 SCALE: 3" = 1'-0"

2X4 S.P.F. #2  
LAID FLAT

NOTE:  
FOR MAX. 2'-0" WIDE X 3'-0"  
DEEP WINDOW.

**5 WINDOW HEADER AND SILL DETAIL**  
S-14 SCALE: N.T.S.

(3) 0.131"Ø X 3"  
GUNNAILS  
EACH END OF  
HEADER

NOTE:  
FOR MAX. 6'-0" WIDE X 6'-8"  
DEEP OPENING ON END WALL.

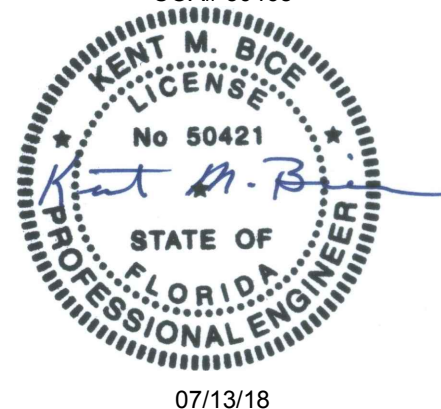
(6) 0.131"Ø X 3-1/2"  
GUNNAILS EACH  
END OF HEADER

**6 HEADER WITHOUT STRAP**  
S-14 SCALE: N.T.S.

2X4 CRIPPLE STUD  
20 GA. STRAP TO WRAP UNDER  
DOOR HEADER TO OTHER SIDE  
OF CRIPPLE STUD WITH (3)  
0.131"Ø X 2-1/4" GUNNAILS OR  
EQUAL ON EACH SIDE

**8 CRIPPLE STUD WITH STRAP DETAIL**  
S-14 SCALE: N.T.S.

Engineer: Kent Bice  
FL License #: 50421  
COA# 30468



1552 6TH ST., WINTER HAVEN, FL 33880  
(863)865-6502

## DETAILS

DATE: 07/13/18 DRAWN BY: RD  
SCALE: AS NOTED CHECKED BY: KMB

SHEET:

**S-14**

SHEET 15 OF 15

THESE PLANS WERE DESIGNED IN ACCORDANCE WITH THE 6TH EDITION, 2017 FLORIDA BUILDING CODE.

# COOK PORTABLE WAREHOUSES

100 DOUGLAS ST. VALDOSTA, GA 31601  
132 CENTRAL INDUSTRIAL ROW, PURVIS, MS 39475  
1398 HWY 95 NORTH, BASTROP, TX 78602

## TIEDOWN PLANS

STATE OF  
FLORIDA

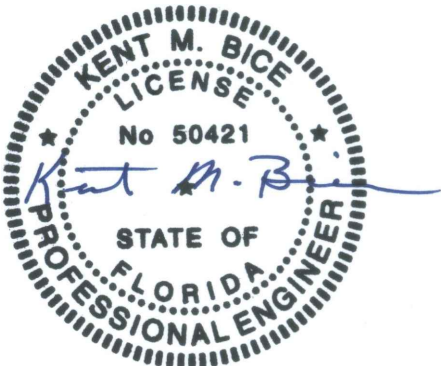
### GENERAL NOTES

1. THE CONTRACTOR SHALL BE RESPONSIBLE FOR VERIFYING ALL EXISTING CONDITIONS.
2. THE CONTRACTOR SHALL BE RESPONSIBLE FOR COORDINATING ARCHITECTURAL, STRUCTURAL, MECHANICAL, AND ELECTRICAL DETAIL AND DIMENSIONS. ANY DISCREPANCIES BETWEEN SUCH DETAILS AND DIMENSIONS SHALL BE REPORTED TO THE ENGINEER PRIOR TO PROCEEDING WITH THE WORK.
3. THE CONTRACTOR SHALL BE RESPONSIBLE FOR ERECTION PROCEDURE AND SEQUENCE TO INSURE THE INTEGRITY OF THE BUILDING AND ITS COMPONENT PARTS DURING CONSTRUCTION.
4. THESE PLANS HAVE BEEN PREPARED PER REGULATIONS OF THE 6TH EDITION, 2017 FLORIDA BUILDING CODE. THE WORK OF ALL CONTRACTORS SHALL COMPLY WITH THE REQUIREMENTS SET FORTH IN THE AFOREMENTIONED CODE. NO DEVIATIONS FROM THE WORK SHOWN OR REASONABLY IMPLIED SHALL BE UNDERTAKEN WITHOUT THE ENGINEERS WRITTEN CONSENT - A COPY OF WHICH WILL BE FILED WITH THE CONSTRUCTION OFFICIAL.
5. ANY CHANGES TO OR DEVIATIONS FROM THESE DRAWINGS SHALL NOT BE MADE WITHOUT WRITTEN CONSENT FROM THE ENGINEER.
6. THESE DRAWINGS ARE THE PROPERTY OF THE ENGINEER AND SHALL NOT BE USED WITHOUT HIS CONSENT. DRAWINGS SHALL NOT BE USED FOR ISSUE OF BUILDING PERMIT UNLESS SIGNED AND SEALED BY THE ENGINEER.
7. THE OWNER AND THE CONTRACTOR SHALL HOLD HARMLESS THE ENGINEER FROM AND AGAINST ALL LIABILITY CLAIMS, DAMAGES, LOSSES, AND EXPENSES INCLUDING LEGAL FEES ARISING OUT OF OR RESULTING FROM ERRORS OR OMISSIONS IN THE PERFORMANCE OF THE WORK BY THE CONTRACTOR. THE DRAWINGS SHOW THE GENERAL ARRANGEMENTS AND EXTENT OF THE WORK. AS THE WORK PROGRESSES, THE OWNER AND THE CONTRACTOR, AT NO EXTRA COSTS, SHALL MAKE THE MODIFICATIONS TO MAKE THE PARTS ALIGN.
8. ALL WORK AND MATERIALS SHALL MEET THE REQUIREMENTS OF LOCAL AND STATE CODES AND THE SPECS OF THE NATIONAL BOARD OF FIRE UNDERWRITERS. CONTRACTORS SHALL CHECK AND VERIFY ALL PLAN DIMENSIONS AND CONDITIONS BEFORE PROCEEDING WITH CONSTRUCTION. HE SHALL REPORT ANY DISCREPANCIES TO THE ENGINEER FOR CORRECTION PRIOR TO BEGINNING ANY WORK. THE DISCOVERY OF DISCREPANCIES AFTER THE BEGINNING OF WORK WILL BE EVIDENCE OF FAULTY WORK. AND SHALL BE THE RESPONSIBILITY OF THE CONTRACTOR. DO NOT SCALE DRAWINGS. ALL WRITTEN DIMENSIONS GOVERN.
9. THE CONTRACTOR FOR THIS PROJECT SHALL INCLUDE ALL MATERIALS AND LABOR REQUIRED TO COMPLETE THE TOTAL PROJECT. THE CONTRACTOR SHALL FURNISH AND PAY FOR ALL MATERIALS. TOOLS, EQUIPMENT, LABOR, MACHINERY, TRANSPORTATION, HEAT, WATER, UTILITIES, AND ALL OTHER FACILITIES AND SERVICES REQUIRED FOR THE SAFE AND PROPER EXECUTION AND COMPLETION OF THE WORK.
10. THE DOCUMENTS SHOW AN OVERVIEW OF THE WORK REQUIRED UNDER THIS CONTRACT AND RELATED REQUIREMENTS AND CONDITIONS THAT WILL IMPACT THE PROJECT. ALL DRAWINGS ARE COMPLIMENTARY. THE DRAWINGS GENERALLY SHOW THE INTENT OF THE OVERALL COMPLEXITY AND CONCEPTS OF THE PROJECT, AND DO NOT NECESSARILY SHOW ALL DETAILS AND CONDITIONS. ALL NEW INTERIOR CONCRETE SLABS AND FOUNDATION WALLS AND FOOTINGS SHALL HAVE SOIL POISONING UNDER NEW WORK AND SHALL BE INSTALLED BY A LICENSED CONTRACTOR.
11. ALL WORK SHALL BE COMPLETED IN ACCORDANCE WITH ALL STATE AND DEPARTMENT OF AGRICULTURE, STRUCTURAL PEST CONTROL DIVISION REGULATIONS, RULES DEFINITIONS AND REQUIREMENTS.
12. THE CONTRACTOR SHALL BE RESPONSIBLE FOR VERIFYING AND MAINTAINING ALL EXISTING SETBACKS, EASEMENTS, AND ANY DEED RESTRICTIONS.
13. THE CONTRACTOR SHALL BE RESPONSIBLE FOR FINAL CLEANUP AND SHALL INCLUDE THE SITE, AND THE BUILDING. THE ENTIRE PROJECT SHALL BE LEFT IN A NEW, CLEAN CONDITION.
14. TIEDOWNS SHOWN INCLUDING STRAP AND ANCHOR, AND BEARING PADS ARE BASED ON AN ALLOWABLE BEARING PRESSURE OF 2500 PSF. ANY SOIL CONDITIONS THAT MAY DIFFER FROM THIS MUST BE BROUGHT TO THE ATTENTION OF THE ENGINEER.
15. THE CONTRACTOR IS RECOMMENDED TO USE A SOIL TEST PROBE TO DETERMINE THE SOIL CLASS. WHERE SUCH TESTING IS NOT CONDUCTED, IT IS RECOMMENDED TO USE A 60" GALVANIZED ANCHOR WITH STABILIZER PLATE.
16. CONCRETE PADS UNDER SKIDS ARE OPTIONAL AND SHALL BE LOCATED ON UNDISTURBED SOIL OR PROPERLY COMPACTED FILL MATERIAL. COMPACTED SOIL SHALL BE TESTED TO A MINIMUM OF 95% PROCTOR IN ACCORDANCE WITH ASTM D1557. FILL MATERIAL SHALL BE FREE OF VEGETATION AND FOREIGN MATERIAL.
17. FINISH GRADE SHALL BE SLOPED AWAY FROM THE FOUNDATION FOR DRAINAGE. PROVISIONS SHALL BE MADE TO PREVENT SOIL EROSION UNDER THE PAD AND DIRECT WATER AWAY FROM IT.

### Sheet Index

SHEET NUMBER	SHEET TITLE
F-1	TIEDOWN GENERAL NOTES
F-2	TIEDOWN SCHEDULE FOR EXPOSURE B
F-3	TIEDOWN SCHEDULE FOR EXPOSURE C
F-4	GROUND ANCHOR SCHEDULE
F-5	TIEDOWN SECTIONS
F-6	OPTIONAL PAD DETAILS

Engineer: Kent Bice  
FL License #: 50421  
COA# 30468



04/12/18

1552 6TH ST., WINTER HAVEN, FL 33880  
(863)865-6502

### GENERAL NOTES

DATE: 04/10/18      DRAWN BY: RD  
SCALE: AS NOTED      CHECKED BY: KMB

SHEET:

F-1

SHEET 1 OF 6

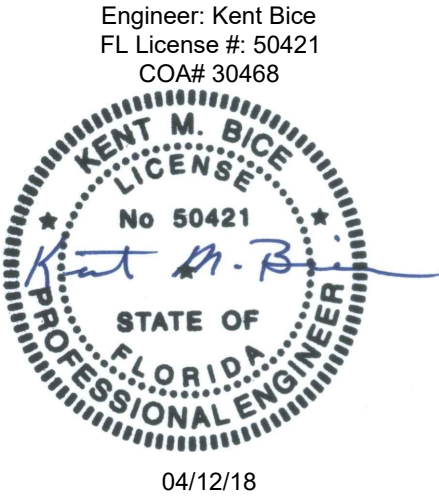
THESE PLANS WERE DESIGNED IN ACCORDANCE WITH THE 6TH EDITION, 2017 FLORIDA BUILDING CODE.

TIEDOWN SCHEDULE FOR UP TO 110 MPH WIND SPEED, EXPOSURE "B"													
BLDG WIDTH	NUMBER OF TIEDOWNS PER OUTER SKID BY BUILDING LENGTH (FT)												
	8'-0"	10'-0"	12'-0"	14'-0"	16'-0"	18'-0"	20'-0"	22'-0"	24'-0"	26'-0"	28'-0"	30'-0"	32'-0"
6'-0"	2	2	2	N/A	N/A	N/A	N/A	N/A	N/A	N/A	N/A	N/A	N/A
7'-11" 1/2"	2	2	2	2	2	2	2	2	2	N.A.	N.A.	N.A.	N.A.
9'-11" 1/2"	2	2	2	2	2	2	2	2	2	2	2	2	N.A.
11'-0"	2	2	2	2	2	2	2	2	2	2	2	2	2

TIEDOWN SCHEDULE FOR 111 TO 130 MPH WIND SPEED, EXPOSURE "B"													
BLDG WIDTH	NUMBER OF TIEDOWNS PER OUTER SKID BY BUILDING LENGTH (FT)												
	8'-0"	10'-0"	12'-0"	14'-0"	16'-0"	18'-0"	20'-0"	22'-0"	24'-0"	26'-0"	28'-0"	30'-0"	32'-0"
6'-0"	2	2	2	N/A	N/A	N/A	N/A	N/A	N/A	N/A	N/A	N/A	N/A
7'-11" 1/2"	2	2	2	2	2	2	2	2	2	N.A.	N.A.	N.A.	N.A.
9'-11" 1/2"	2	2	2	2	2	2	2	2	2	2	2	2	N.A.
11'-0"	2	2	2	2	2	2	2	2	2	2	2	2	2

TIEDOWN SCHEDULE FOR 131 TO 160 MPH WIND SPEED, EXPOSURE "B"													
BLDG WIDTH	NUMBER OF TIEDOWNS PER OUTER SKID BY BUILDING LENGTH (FT)												
	8'-0"	10'-0"	12'-0"	14'-0"	16'-0"	18'-0"	20'-0"	22'-0"	24'-0"	26'-0"	28'-0"	30'-0"	32'-0"
6'-0"	2	2	2	N/A	N/A	N/A	N/A	N/A	N/A	N/A	N/A	N/A	N/A
7'-11" 1/2"	2	2	2	2	2	2	3	3	3	N.A.	N.A.	N.A.	N.A.
9'-11" 1/2"	2	2	2	2	2	2	2	3	3	3	3	3	N.A.
11'-0"	2	2	2	2	2	2	2	3	3	3	3	3	4

1. PROVIDE A MINIMUM OF ONE TIEDOWN STRAP AND ANCHOR AT EACH END OF EACH OUTER SKID. EVENLY SPACE THE REMAINING TIEDOWNS.
2. WRAP THE STRAP AROUND THE SKID AND ATTACH TO ANCHOR.
3. MAXIMUM PERMITTED ANGLE OF STRAP FROM VERTICAL IS 45 DEGREES. LOCATE ANCHORS VERTICALLY INTO THE GROUND.



1552 6TH ST., WINTER HAVEN, FL 33880  
(863)865-6502

TIEDOWN SCHEDULE  
FOR EXPOSURE B

DATE: 04/10/18

DRAWN BY: RD

SCALE: AS NOTED

CHECKED BY: KMB

SHEET:

F-2

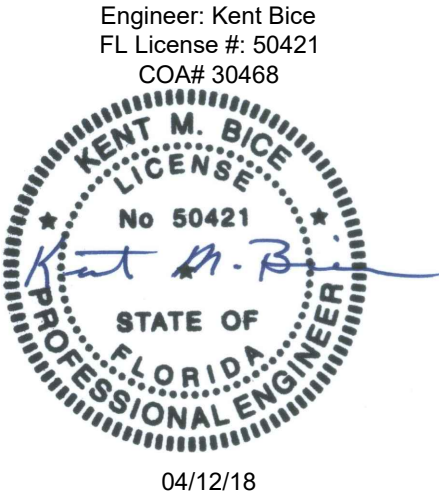
SHEET 2 OF 6

TIEDOWN SCHEDULE FOR UP TO 110 MPH WIND SPEED, EXPOSURE "C"													
BLDG WIDTH	NUMBER OF TIEDOWNS PER OUTER SKID BY BUILDING LENGTH (FT)												
	8'-0"	10'-0"	12'-0"	14'-0"	16'-0"	18'-0"	20'-0"	22'-0"	24'-0"	26'-0"	28'-0"	30'-0"	32'-0"
6'-0"	2	2	2	N/A	N/A	N/A	N/A	N/A	N/A	N/A	N/A	N/A	N/A
7'-11" 1/2"	2	2	2	2	2	2	2	2	2	N.A.	N.A.	N.A.	N.A.
9'-11" 1/2"	2	2	2	2	2	2	2	2	2	2	2	2	N.A.
11'-0"	2	2	2	2	2	2	2	2	2	2	2	2	2

TIEDOWN SCHEDULE FOR 111 TO 130 MPH WIND SPEED, EXPOSURE "C"													
BLDG WIDTH	NUMBER OF TIEDOWNS PER OUTER SKID BY BUILDING LENGTH (FT)												
	8'-0"	10'-0"	12'-0"	14'-0"	16'-0"	18'-0"	20'-0"	22'-0"	24'-0"	26'-0"	28'-0"	30'-0"	32'-0"
6'-0"	2	2	2	N/A	N/A	N/A	N/A	N/A	N/A	N/A	N/A	N/A	N/A
7'-11" 1/2"	2	2	2	2	2	2	2	2	2	N.A.	N.A.	N.A.	N.A.
9'-11" 1/2"	2	2	2	2	2	2	2	2	2	2	3	3	N.A.
11'-0"	2	2	2	2	2	2	2	2	2	2	3	3	3

TIEDOWN SCHEDULE FOR 131 TO 160 MPH WIND SPEED, EXPOSURE "C"													
BLDG WIDTH	NUMBER OF TIEDOWNS PER OUTER SKID BY BUILDING LENGTH (FT)												
	8'-0"	10'-0"	12'-0"	14'-0"	16'-0"	18'-0"	20'-0"	22'-0"	24'-0"	26'-0"	28'-0"	30'-0"	32'-0"
6'-0"	2	2	2	N/A	N/A	N/A	N/A	N/A	N/A	N/A	N/A	N/A	N/A
7'-11" 1/2"	2	2	2	3	3	3	4	4	4	N.A.	N.A.	N.A.	N.A.
9'-11" 1/2"	2	2	2	2	2	3	3	3	3	3	4	4	N.A.
11'-0"	2	2	2	2	2	3	3	3	3	3	4	4	4

1. PROVIDE A MINIMUM OF ONE TIEDOWN STRAP AND ANCHOR AT EACH END OF EACH OUTER SKID. EVENLY SPACE THE REMAINING TIEDOWNS.
2. WRAP THE STRAP AROUND THE SKID AND ATTACH TO ANCHOR.
3. 3. MAXIMUM PERMITTED ANGLE OF STRAP FROM VERTICAL IS 45 DEGREES. LOCATE ANCHORS VERTICALLY INTO THE GROUND.



1552 6TH ST., WINTER HAVEN, FL 33880  
(863)865-6502

TIEDOWN SCHEDULE  
FOR EXPOSURE C

DATE: 04/10/18

DRAWN BY: RD

SCALE: AS NOTED

CHECKED BY: KMB

SHEET:

F-3

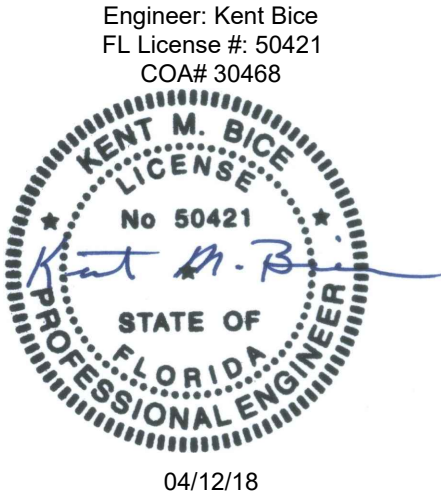
SHEET 3 OF 6

THESE PLANS WERE DESIGNED IN ACCORDANCE WITH THE 6TH EDITION, 2017 FLORIDA BUILDING CODE.



GROUND ANCHOR SCHEDULE			
MODEL #	PART #	DESCRIPTION	SOIL CLASS
M12H5/8	59080 / 59081	48" X 5/8" ROD WITH (1) 6" HELIX	4A
M12H3/4	59085 / 59094	48" X 3/4" ROD WITH (1) 6" HELIX	4A
M1423/4	59128	42" X 3/4" ROD WITH (2) 4" HELIX	4A
M1483/4	59086	48" X 3/4" ROD WITH (2) 4" HELIX	4A
M12H64	59250	36" X 3/4" ROD WITH (1) 4" HELIX AND (1) 6" HELIX	4A
N/A	59065	EYE ANCHOR - 48" X 5/8" WITH (1) 6" HELIX	4A
N/A	59045	EYE ANCHOR - 48" X 3/4" WITH (1) 6" HELIX	4A
M607	59099	60" X 3/4" WITH (1) 7" HELIX	4B
N/A	59040	EYE ANCHOR - 60" X 3/4" WITH (1) 8" HELIX	4B

- NOTES:
- 1. ALL APPROVED ANCHORS LISTED ABOVE ARE MANUFACTURED BY TIE DOWN ENGINEERING.
  - 2. THE CONTRACTOR MAY USE AN APPROVED EQUIVALENT WITH APPROVAL FROM THE EOR.
  - 3. ANCHORS SHALL BE INSTALLED PER MANUFACTURER INSTRUCTIONS.

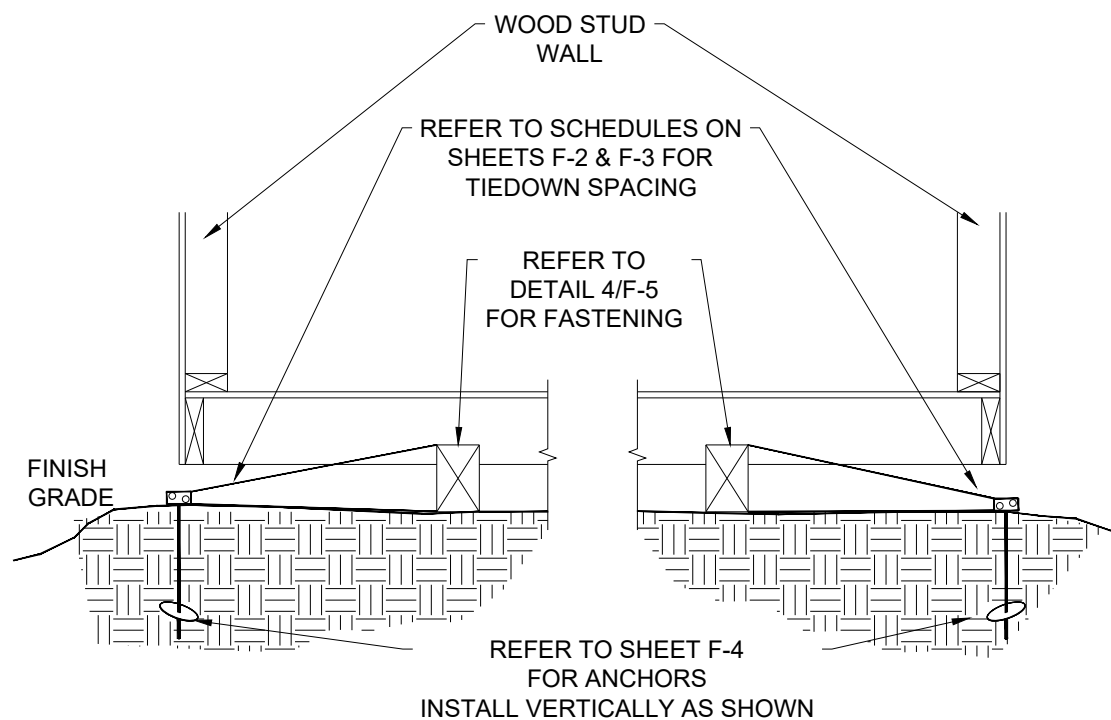


1552 6TH ST., WINTER HAVEN, FL 33880  
(863)865-6502

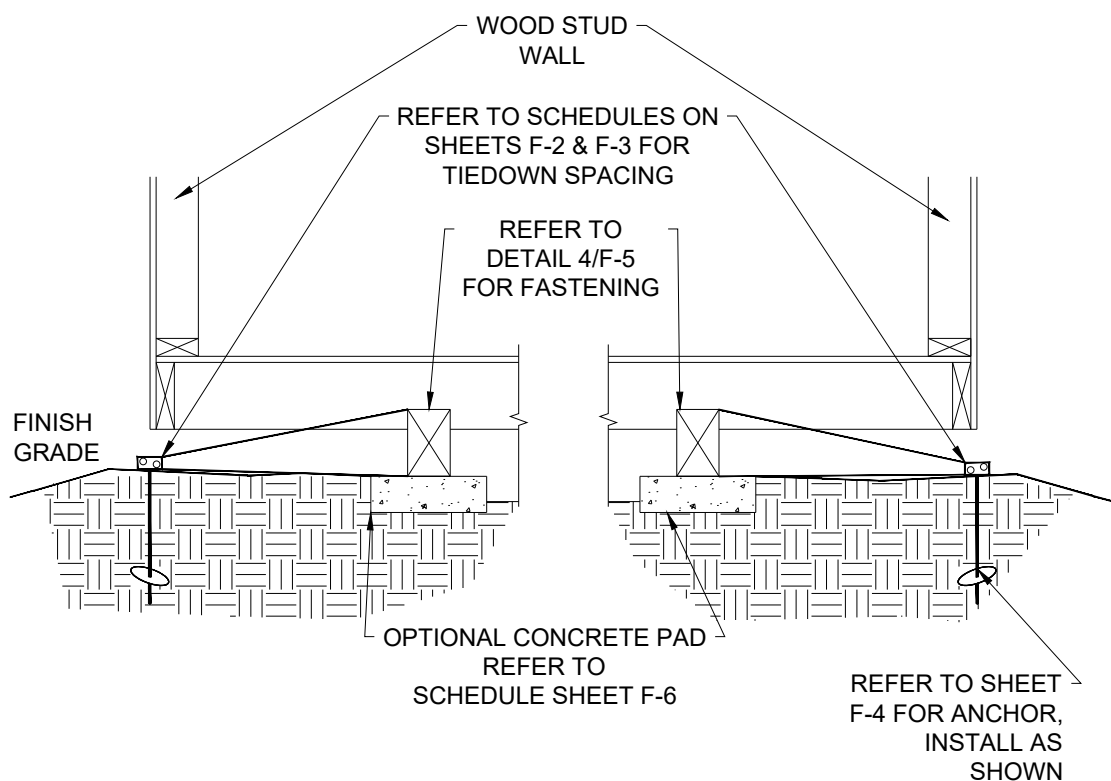
GROUND ANCHOR SCHEDULE	
DATE: 04/10/18	DRAWN BY: RD
SCALE: AS NOTED	CHECKED BY: KMB

SHEET:
F-4
SHEET 4 OF 6

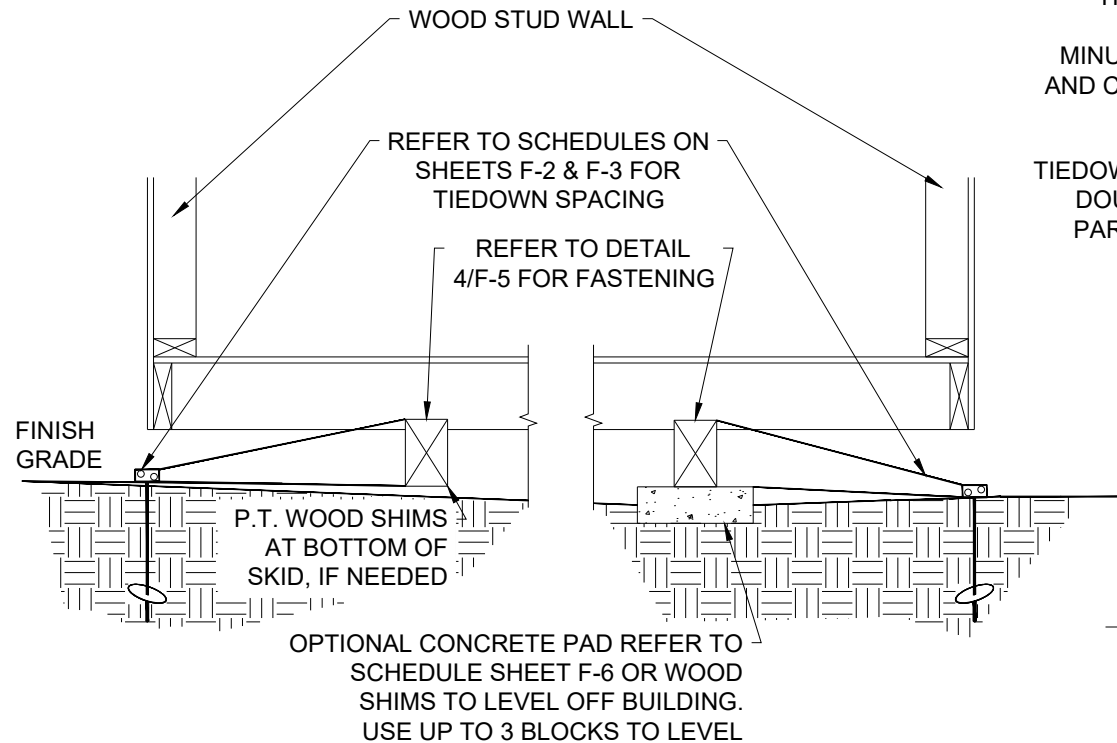
THESE PLANS WERE DESIGNED IN ACCORDANCE WITH THE 6TH EDITION, 2017 FLORIDA BUILDING CODE.



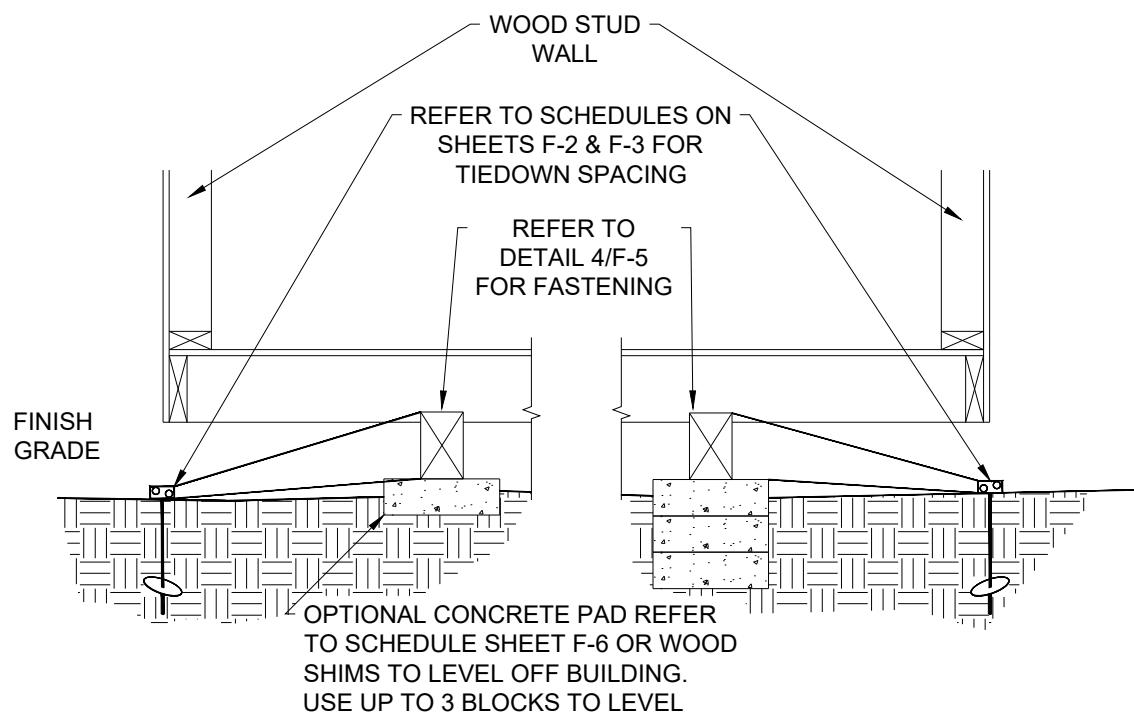
**1**  
F-5 **ALL SKIDS ON GRADE VERTICAL ANCHOR SECTION**  
SCALE: N.T.S.



**3**  
F-5 **ALL SKIDS ON CONC. PADS VERTICAL ANCHOR SECTION**  
SCALE: N.T.S.



**2**  
F-5 **SKIDS ON GRADE & CONC. PADS VERTICAL ANCHOR UN-LEVEL GROUND SECTION**  
SCALE: N.T.S.



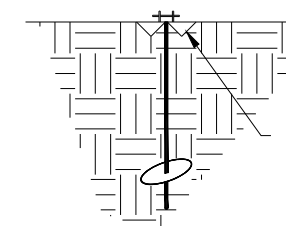
**6**  
F-5 **ALL SKIDS ON CONC. PADS VERTICAL ANCHOR UN-LEVEL GROUND SECTION**  
SCALE N.T.S.

TIEDOWN STRAP - 0.035 x 1-1/4" GALVANIZED STEEL QQS-781-H 1 FINISH B, GRADE 1 BY MINUTEMAN PRODUCTS INC. OR EQUAL. STRAP AND CONNECTION HARDWARE SHALL HAVE 4725 LB. MIN. ULTIMATE CAPACITY

TIEDOWN ENGINEERING DOUBLE TENSIONER PART NUMBER 59100

BUILDING SKID REFER TO BUILDING PLAN FOR SIZE, LENGTH, AND LOCATION

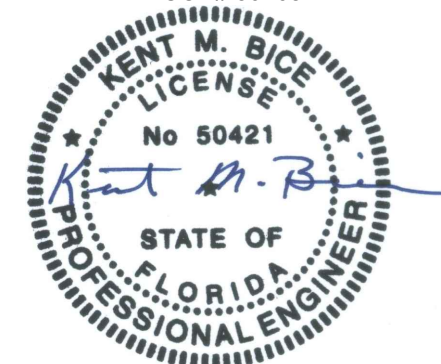
**4**  
F-5 **DETAIL**  
SCALE: N.T.S.



STABILIZER PLATE #59286 FOR CLASS 4 SOILS OR #59292 BY TIE DOWN ENGINEERING OR EQUAL, AT ALL ANCHOR LOCATIONS EACH SIDE OF SHED, IF REQUIRED

**5**  
F-5 **STABILIZER PLATE DETAIL**  
SCALE N.T.S.

Engineer: Kent Bice  
FL License #: 50421  
COA# 30468



04/12/18

1552 6TH ST., WINTER HAVEN, FL 33880  
(863)865-6502

## TIEDOWN SECTIONS

DATE: 04/10/18

DRAWN BY: RD

SCALE: AS NOTED

CHECKED BY: KMB

SHEET:

**F-5**

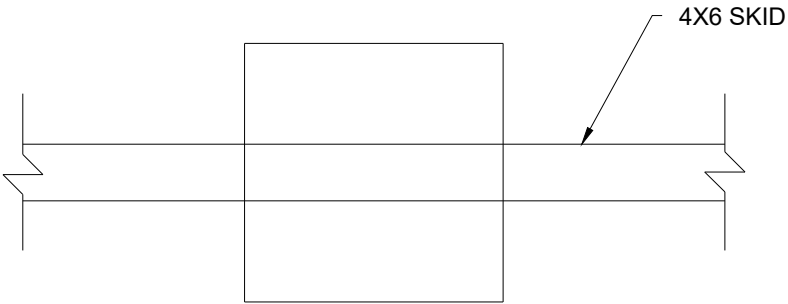
SHEET 5 OF 6

THESE PLANS WERE DESIGNED IN ACCORDANCE WITH THE 6TH EDITION, 2017 FLORIDA BUILDING CODE.

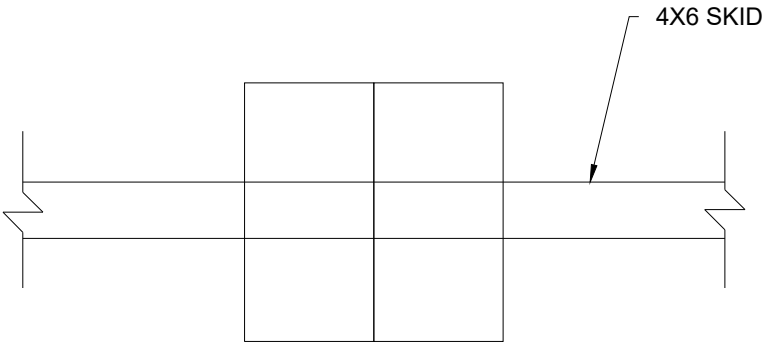
- NOTE:
- 1. 4" MIN. THICK, 2500 PSI MIN. CONCRETE PADS ARE OPTIONAL.
  - 2. DIMENSIONS SHOWN ARE NOMINAL.
  - 3. TIEDOWNS ARE REQUIRED MIN. (4) PER BUILDING, (1) AT EACH CORNER SHEARWALL (SW#).
  - 4. REFER TO SCHEDULES ON SHEET F-2 & F-3 FOR TIEDOWN SPACING AND SCHEDULES ON THIS SHEET FOR OPTIONAL PAD LOCATION.
  - 5. SPACE OPTIONAL PADS AT EACH END OF EACH SKID AND EQUALLY IN-BETWEEN.
  - 6. LOCATE PAD CENTERED UNDER THE SKID.

16" X 16" X 4" OR (2) 16" X 8" X 4" PAD SCHEDULE FOR ALL WIND SPEEDS, EXPOSURES, AND 40 PSF FLOOR LOAD

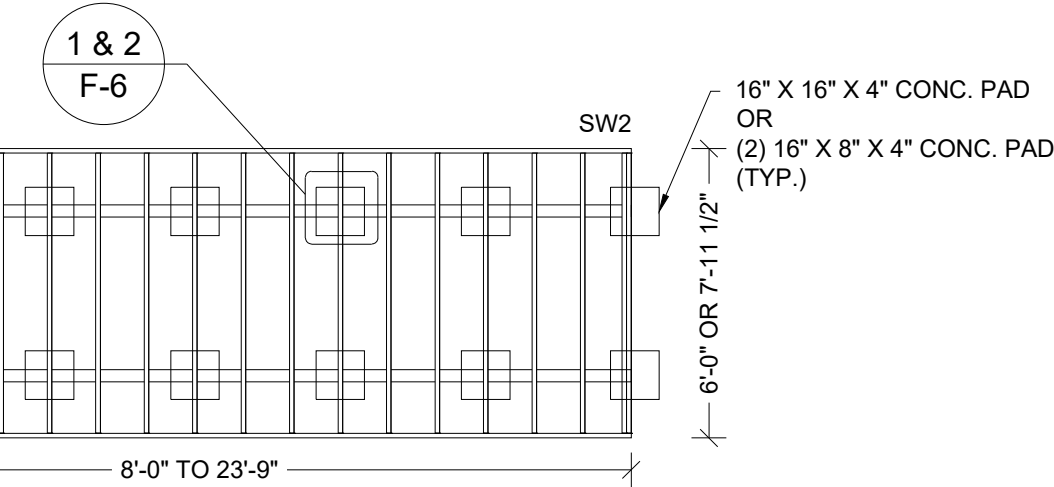
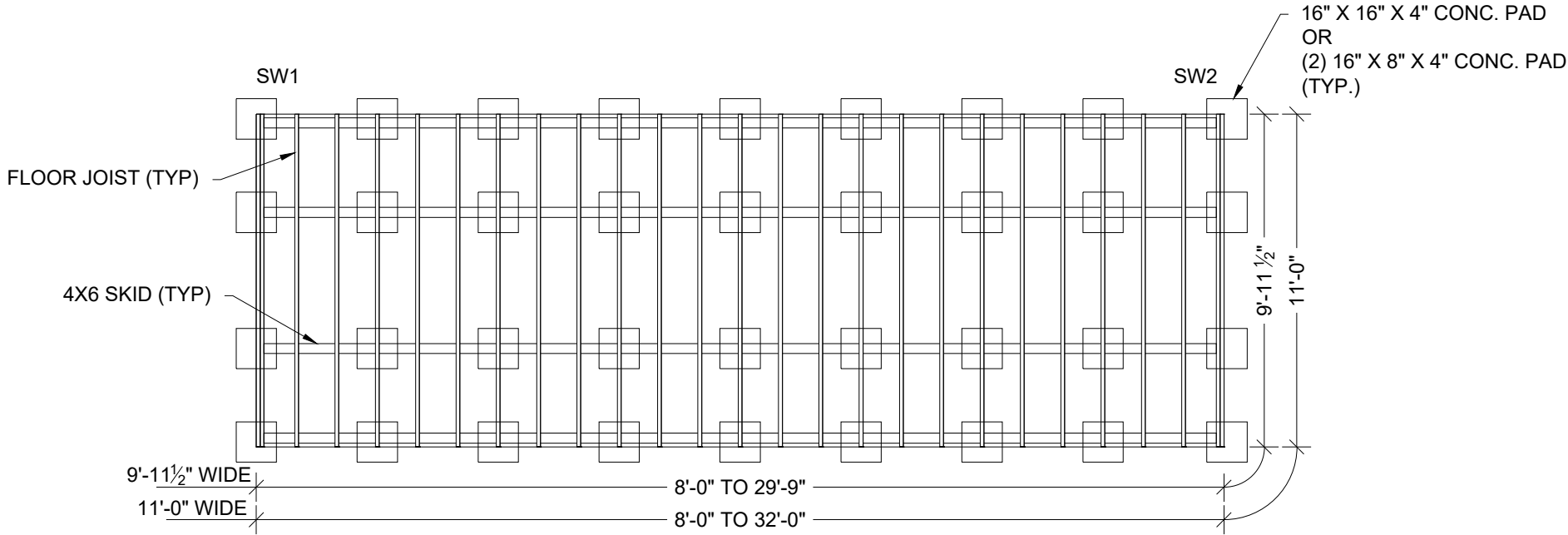
BLDG WIDTH		NUMBER OF PADS REQUIRED BY BUILDING LENGTH UNDER EACH SKID												
		8'-0"	10'-0"	12'-0"	14'-0"	16'-0"	18'-0"	20'-0"	22'-0"	24'-0"	26'-0"	28'-0"	30'-0"	32'-0"
SINGLE WIDE UNITS	6'-0"	3	3	3	N/A	N/A	N/A	N/A	N/A	N/A	N/A	N/A	N/A	N/A
	7'-11 1/2"	3	3	3	4	4	4	5	5	5	N.A.	N.A.	N.A.	N.A.
	9'-11 1/2"	2	3	3	3	3	4	4	4	4	5	5	5	N.A.
	11'-0"	2	3	3	3	3	4	4	4	4	5	5	5	5



1  
F-6  
16"X16"X4" PAD DETAIL  
SCALE: N.T.S.

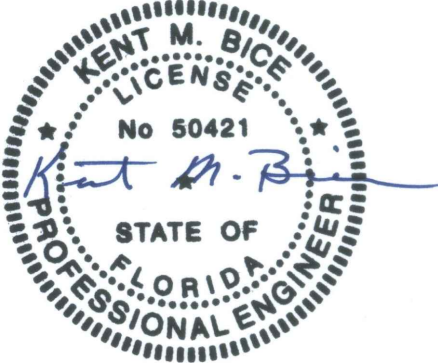


2  
F-6  
(2) 16"X8"X4" PAD DETAIL  
SCALE: N.T.S.



3  
F-6  
PAD LOCATION PLAN  
SCALE: N..T.S.

Engineer: Kent Bice  
FL License #: 50421  
COA# 30468



04/12/18

1552 6TH ST., WINTER HAVEN, FL 33880  
(863)865-6502

OPTIONAL  
PAD DETAILS

DATE: 04/10/18  
SCALE: AS NOTED  
DRAWN BY: RD  
CHECKED BY: KMB

SHEET:

F-6

SHEET 6 OF 6

THESE PLANS WERE DESIGNED IN ACCORDANCE WITH THE 6TH EDITION, 2017 FLORIDA BUILDING CODE.