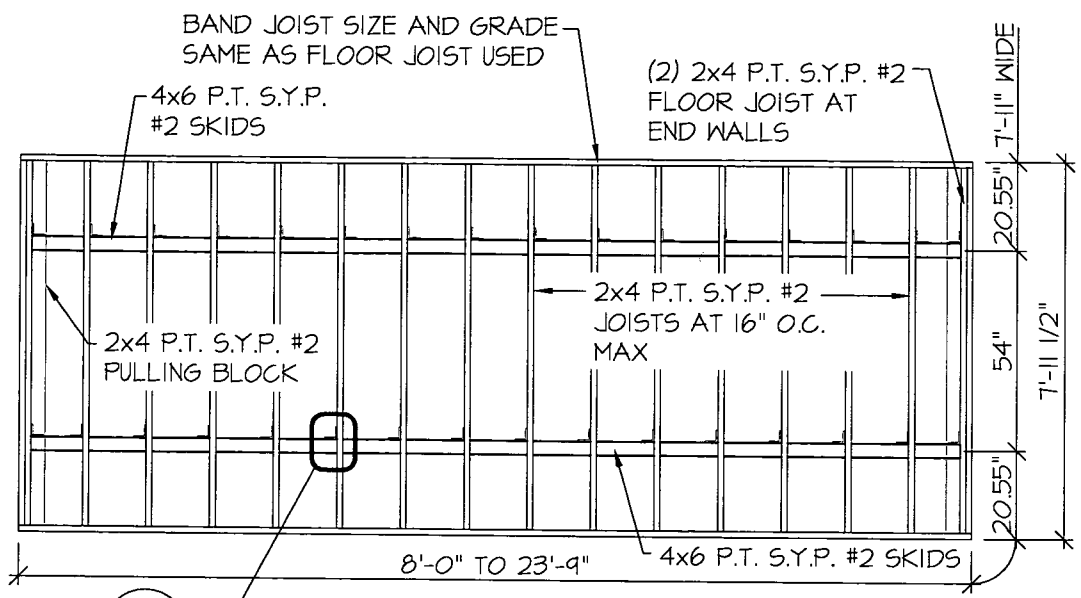
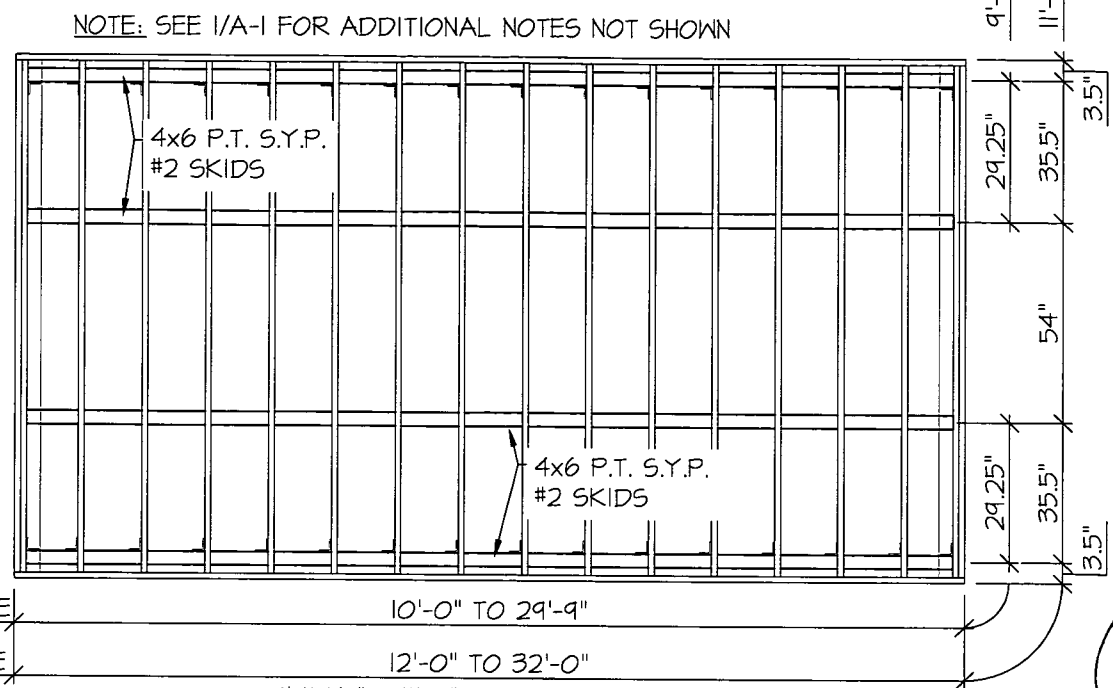


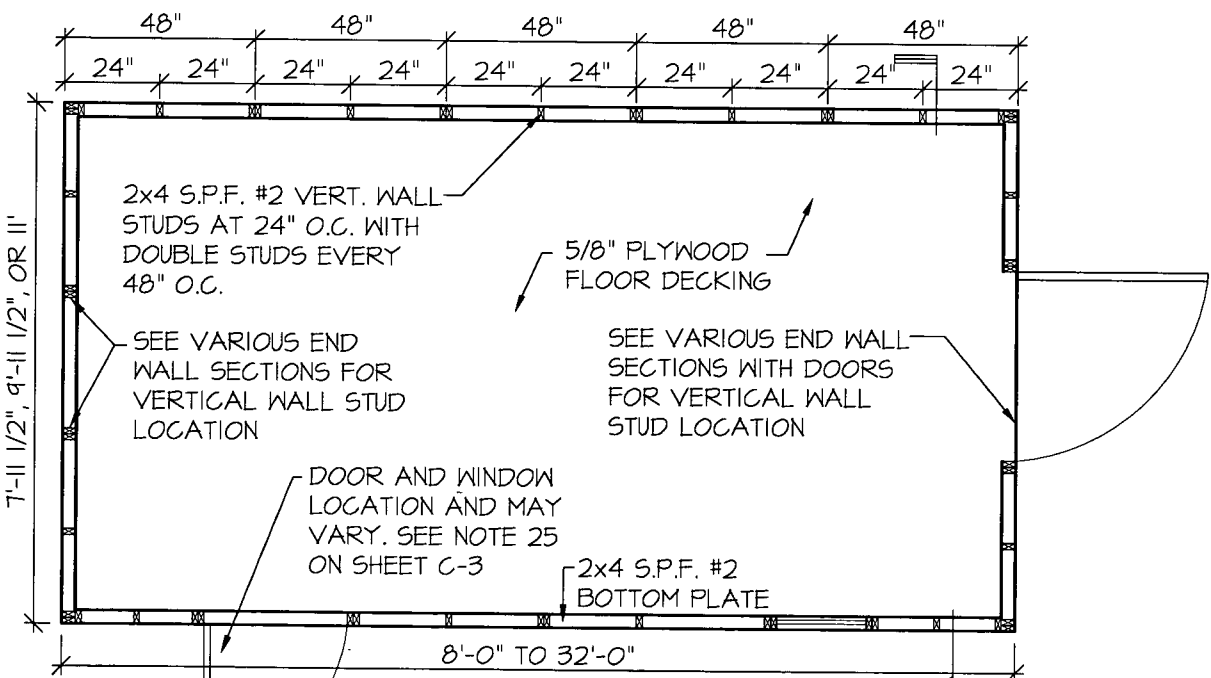
This drawing is the property of Dixon Engineering, Inc. Unless otherwise provided for by contract, or other written means, the contents of this drawing are confidential and shall not be transmitted to any other party except as agreed by Dixon Engineering, Inc. Copyright.



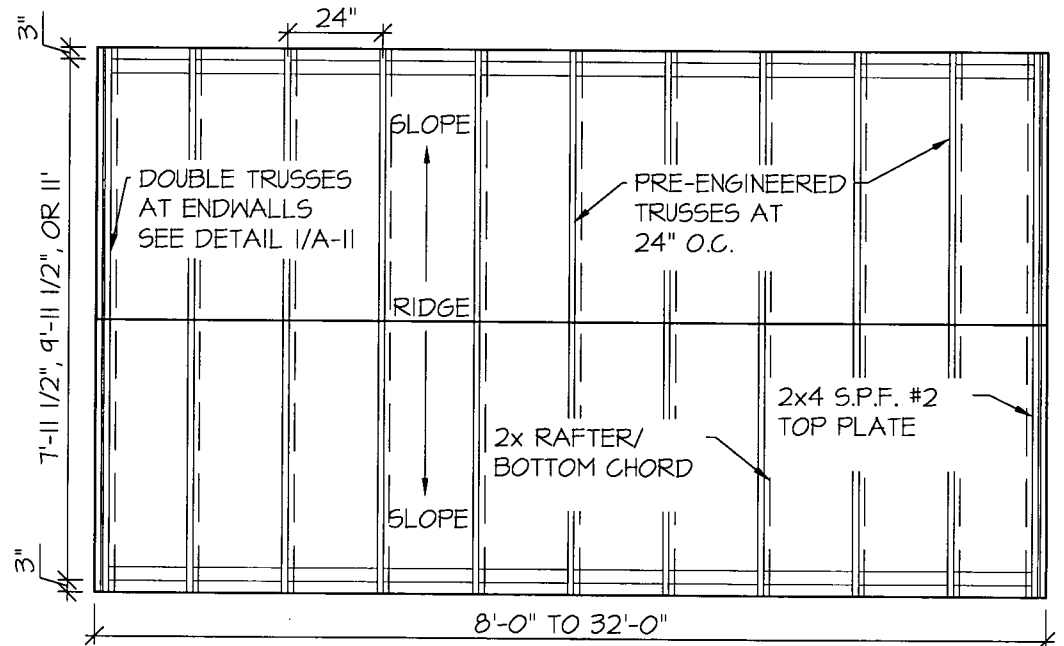
1 FLOOR FRAMING PLAN
 7'-11 1/2" WIDE UNIT WITH 2 SKIDS
 SCALE: 1/4" = 1'-0"



2 FLOOR FRAMING PLAN
 9'-11 1/2" & 11'-0" WIDE UNIT WITH 4 SKIDS
 SCALE: 1/4" = 1'-0"



3 FLOOR PLAN
 SCALE: 1/4" = 1'-0"



4 ROOF FRAMING PLAN
 SCALE: 1/4" = 1'-0"

AREA FOR APPROVAL STAMPS

STATE OF LOUISIANA

THOMAS ALAN DIXON
 License No. 0037001
 PROFESSIONAL ENGINEER
 IN
 STRUCTURAL ENGINEERING

THOMAS A. DIXON
 LICENSED PROFESSIONAL
 ENGINEER
 STATE OF MISSISSIPPI
 19034

STATE OF TEXAS

THOMAS A. DIXON
 104353
 LICENSED
 PROFESSIONAL ENGINEER

2/3/2017

REV	BY	DATE	DESCRIPTION

THESE PLANS WERE DESIGNED IN ACCORDANCE WITH THE 2015 INTERNATIONAL BUILDING CODE FOR A THREE SECOND GUST OF 160 MPH.

THOMAS A. DIXON, P.E.

AL# 30631 MS# 19034 KS# 21198 SC# 27542 NC# 035985 GA# 034371 WV# 071936 TX# 104353 MA# 40905 PA# 079009 VA# 045593 TN# 112761 FL# 34222	DIXON ENGINEERING, INC. STRUCTURAL ENGINEERING AND INSPECTION - COA 8195 10410 MAIN STREET THONOTOSASSA, FL 33592 VOICE: 813-982-9885 FAX: 813-982-2306
--	---

COOK PORTABLE WAREHOUSES
 UTILITY SHED
 100 DOUGLAS STREET
 VALDOSTA, GA 31601
 PHONE: 1-229-241-8805

FLOOR AND FRAMING PLANS

DATE:	6/29/17
DRAWN BY:	CNO
CHECKED BY:	TAD
SCALE:	AS NOTED
W.O. NO.:	495-078

SHEET

A-1

7 OF 20

